



ROLLOUT

Wallpapers by Sergio Mannino Studio

ROLLOUT

Wallpapers by Sergio Mannino Studio

ON DRAWINGS AND DESIGN

A few years ago, researchers found what is believed to be the oldest surviving testimony of human drawings in a cave in South Africa. It is around 74,000 years old. Lascaux in France is a lot "younger" at just 20,000. And they are both breathtaking.

I am sure that even before these examples, our ancestors were already painting the walls of their caves, trees, tools, faces, bodies, and ornaments. It doesn't matter how or what, but we have been drawing for a very long time. It could be a gesture in the sand with a stick, the intricate decor of a cathedral facade, or a kid drawing something for her mom, but we need to draw.

Maybe we need to draw to put a reference point in our existence, like a compass to find our way, to know where we stand, or to cope with life and the idea of mortality. At least, I think it is for me.

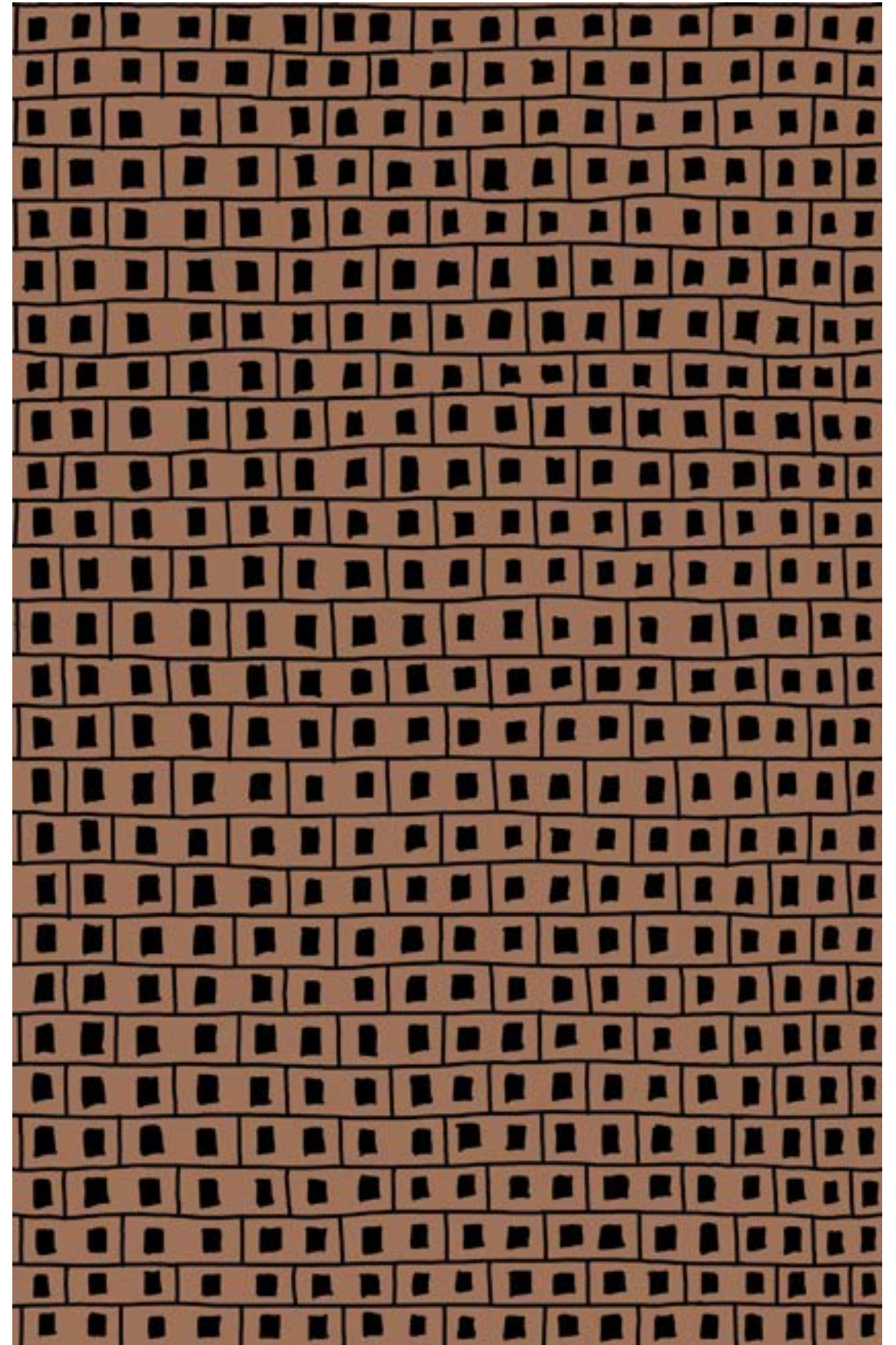
Drawings testify to the ability to symbolize our inner thoughts into stories, where each one is like an extension of our mind on paper. It's a bit like staring at our thoughts in the mirror. When we share them, we communicate with the people around us and influence the world and especially ourselves.

I draw, and that drawing changes me, then I draw again, and I change again. It's almost like the work I produce is an extension of myself on paper. In a way, it's more me than I am, in an eternal vibrating cycle.

These vibrations, sounds coming from a single individual integrated into a symphony played by millions of others, are at the core of what Design is. It is not functions, not problem-solving, not marketing. It's the desire to make sense of the symphony or even just acknowledge that we can never grasp its essence at all.

Sergio Mannino, 2022

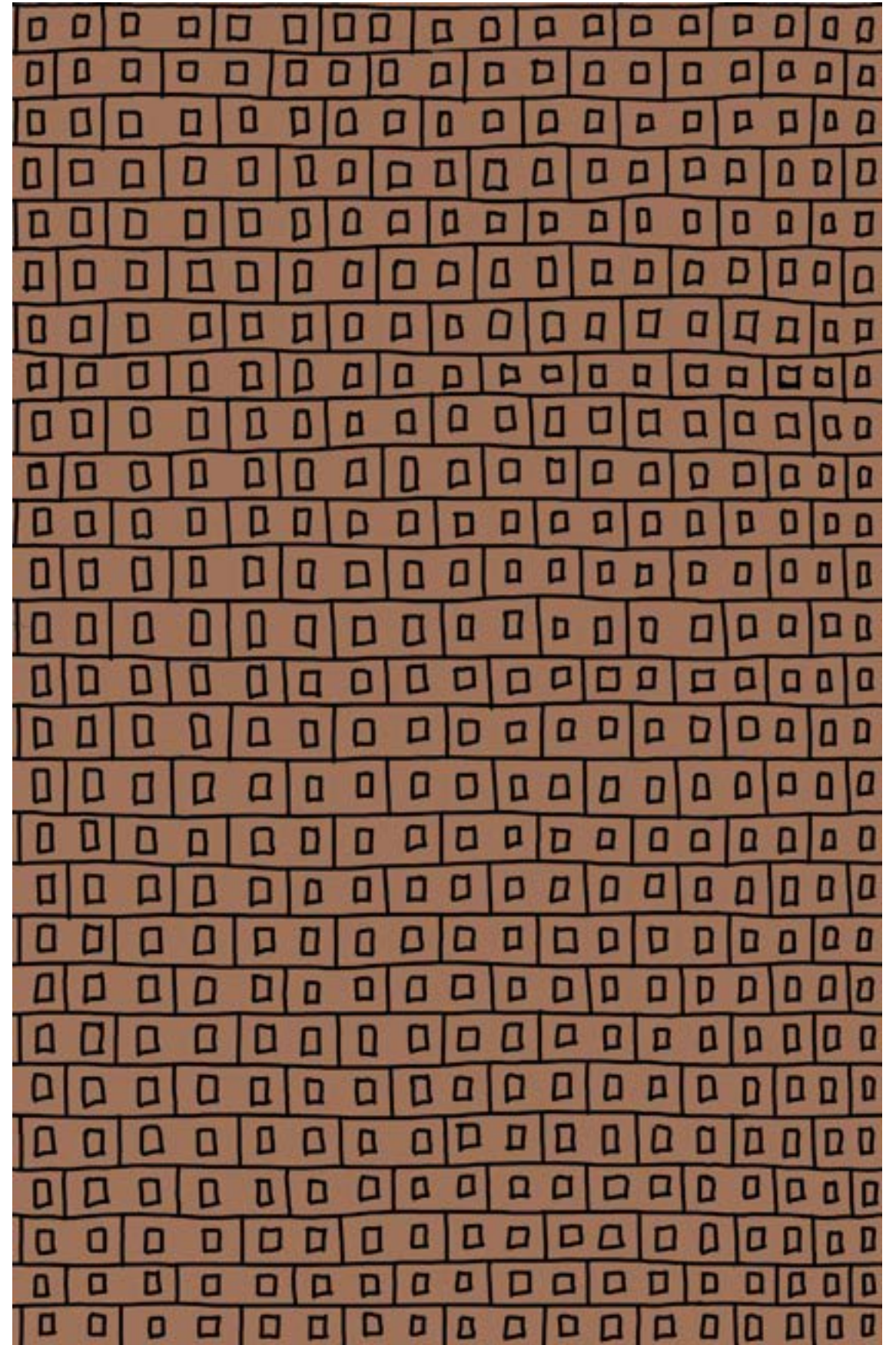
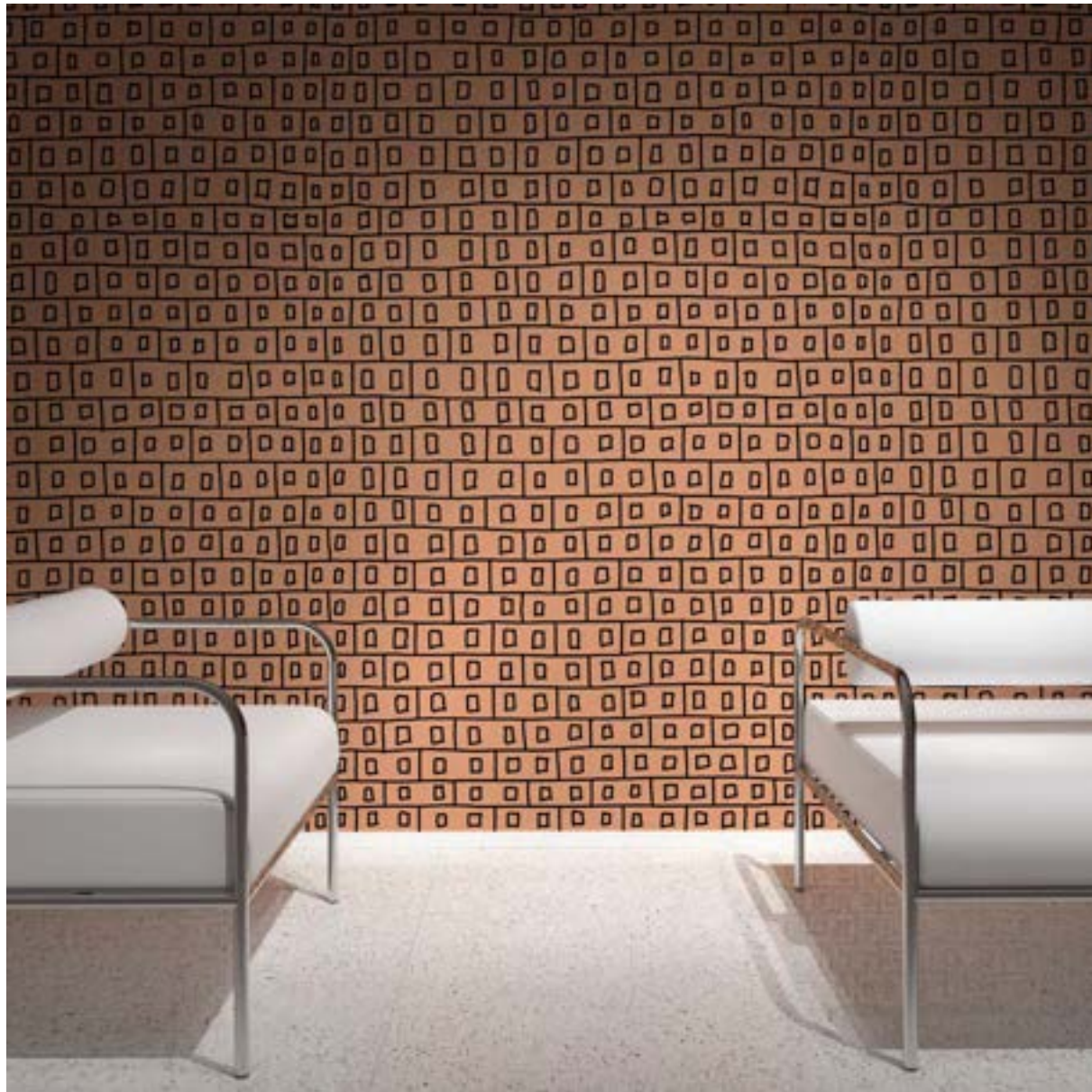
WALLPAPER # 001
BRICK WALL
Dimensions: 62" x 96"



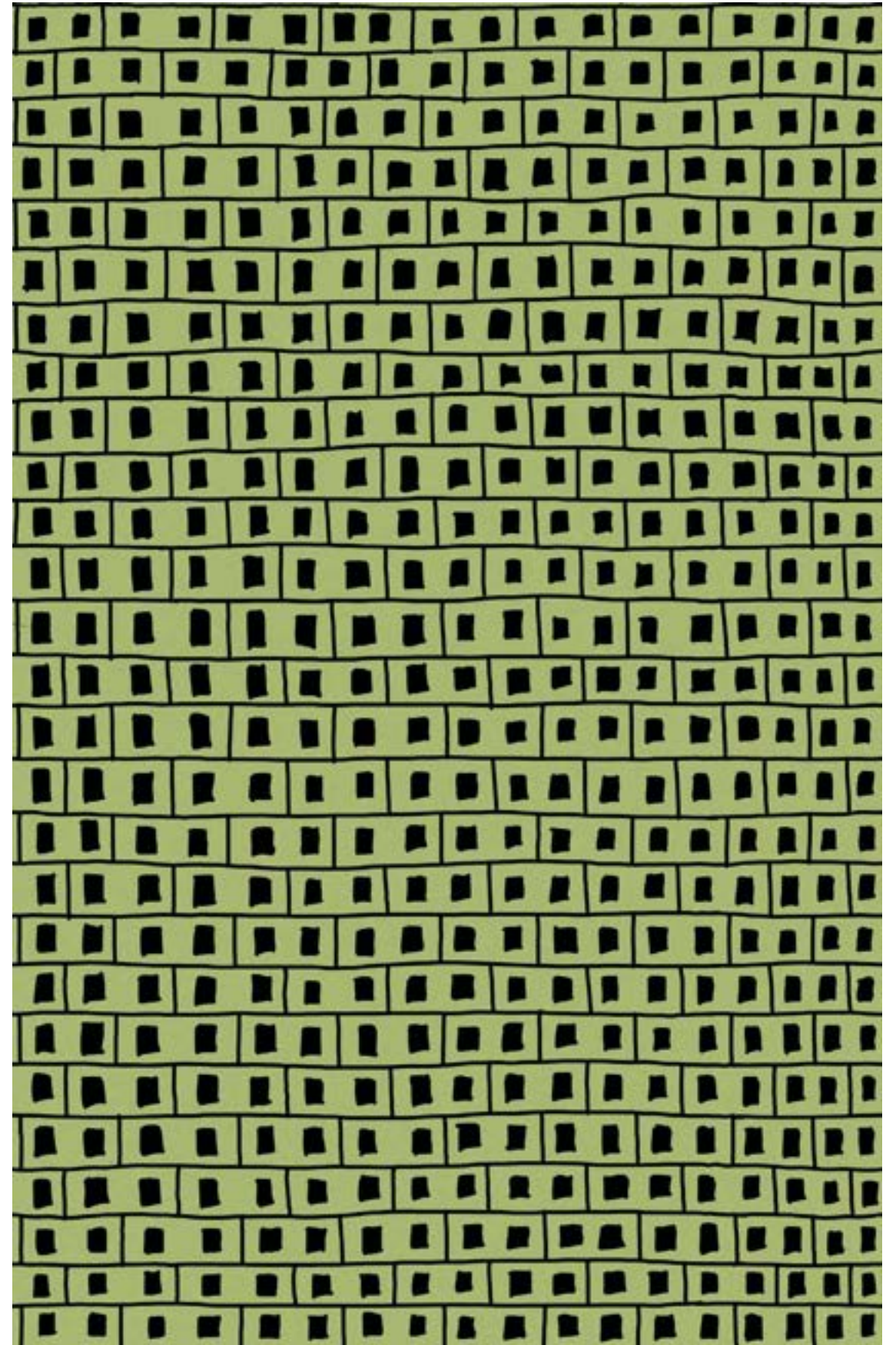
WALLPAPER #002

BRICK WALL

Dimensions: 62" x 96"



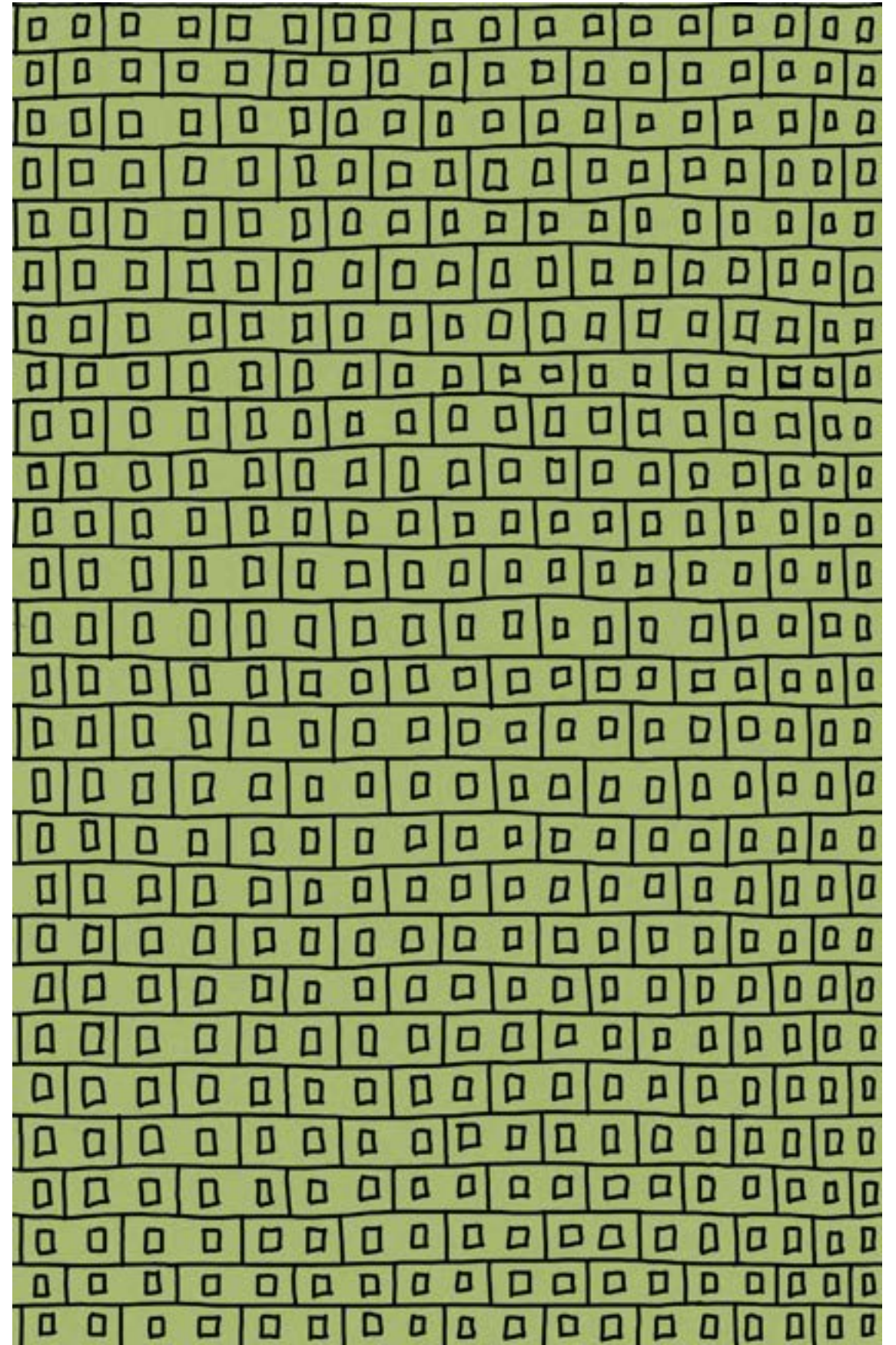
WALLPAPER # 003
BRICK WALL
Dimensions: 62" x 96"



WALLPAPER # 004

BRICK WALL

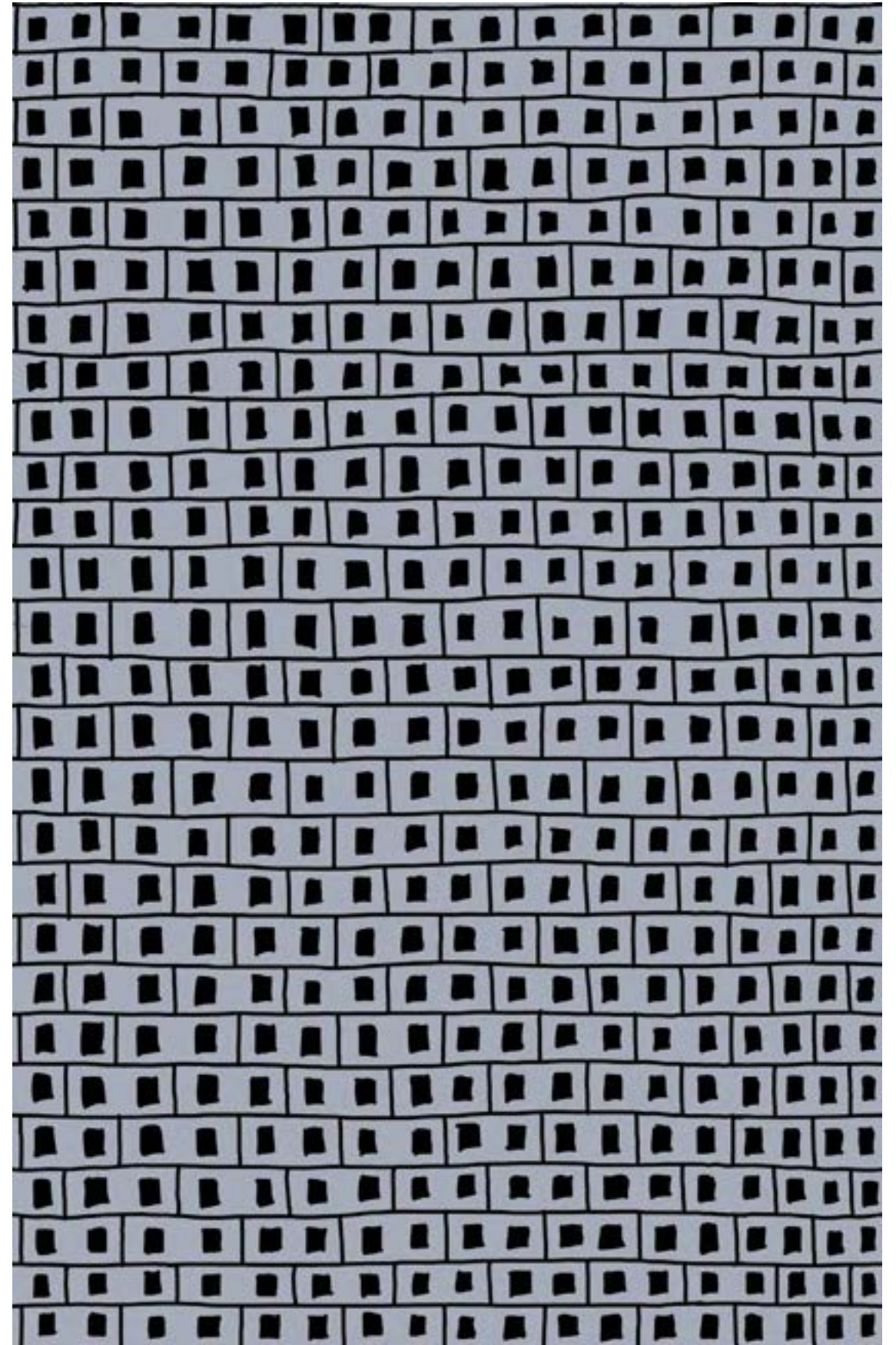
Dimensions: 62" x 96"



WALLPAPER # 005

BRICK WALL

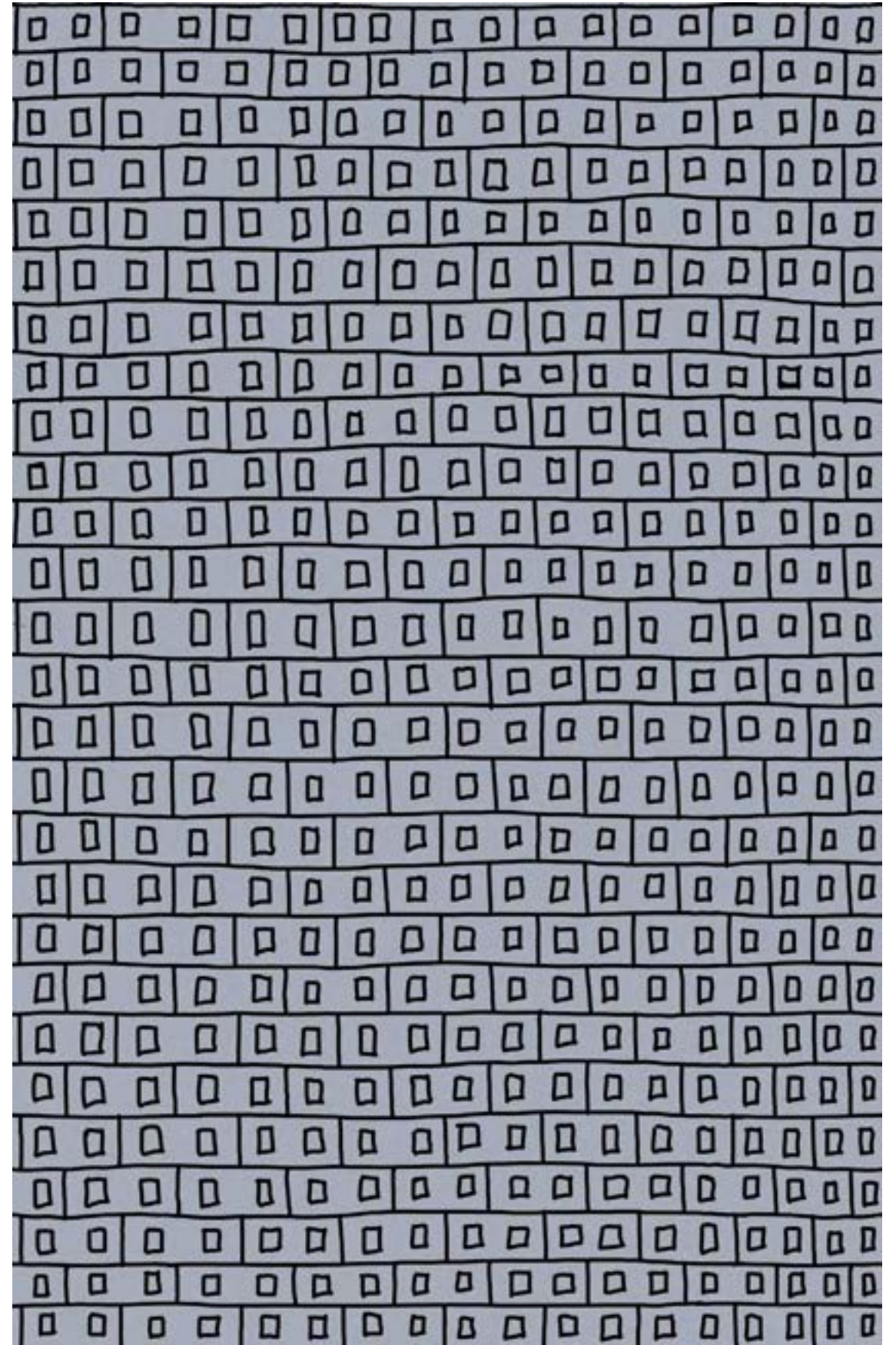
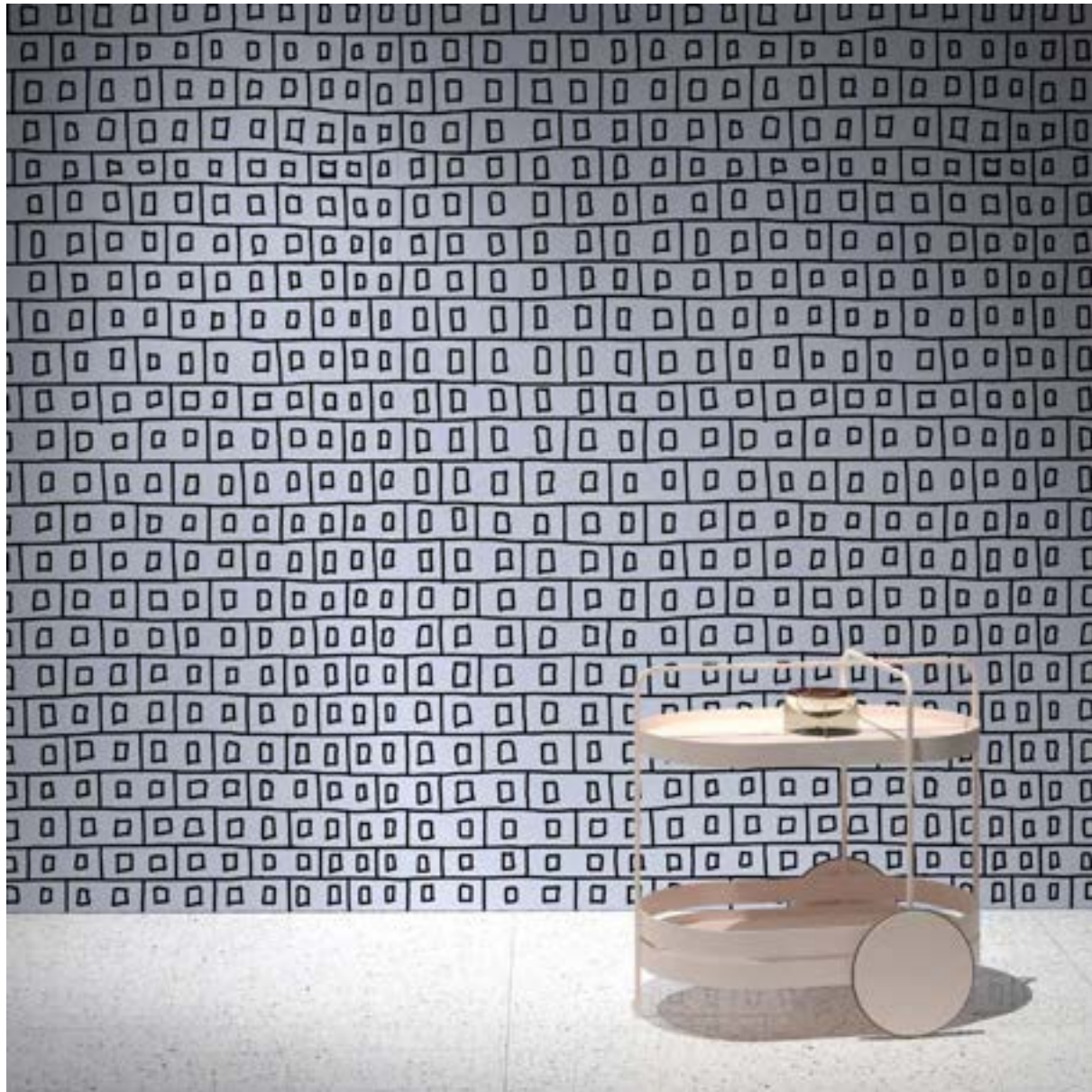
Dimensions: 62" x 96"



WALLPAPER # 006

BRICK WALL

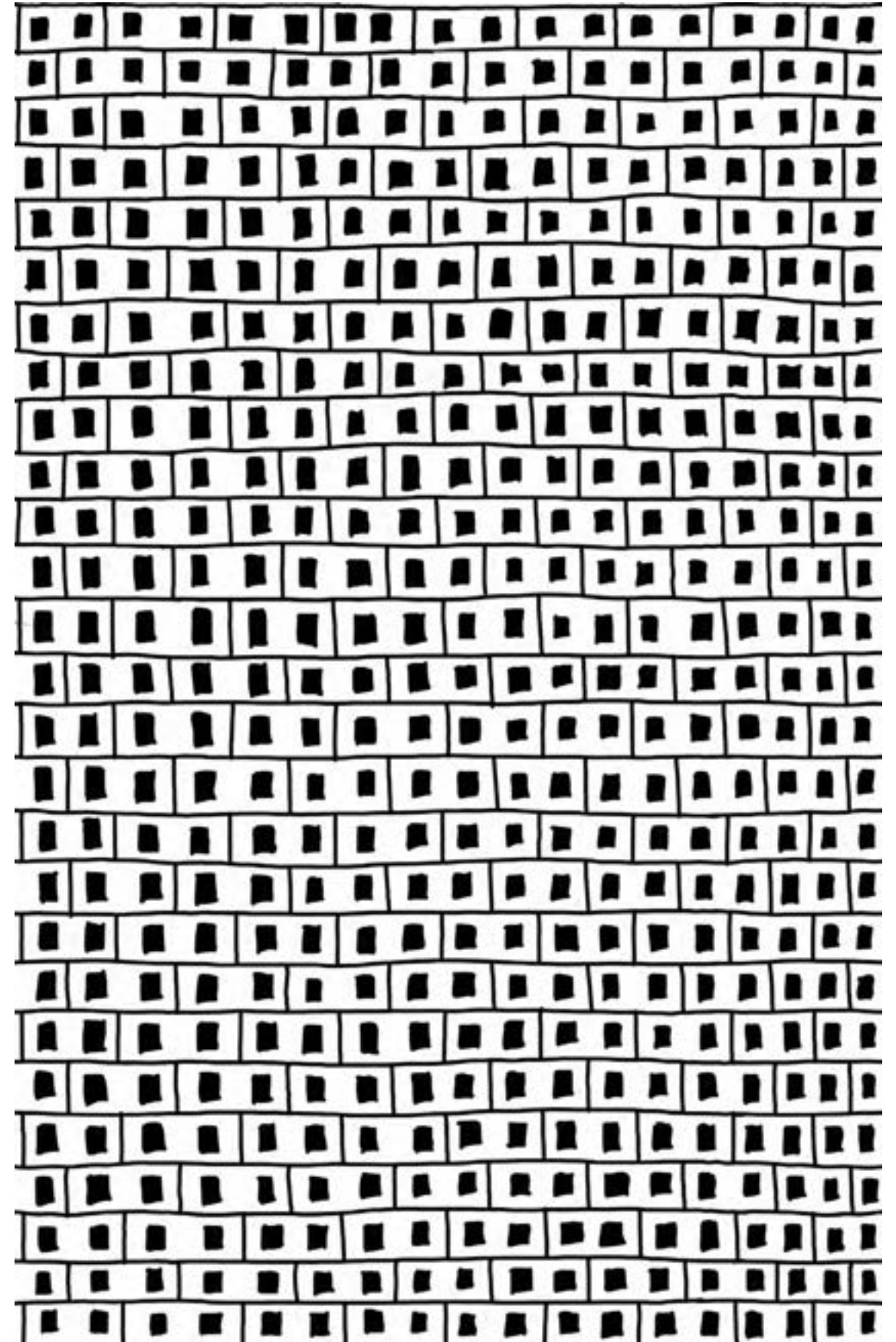
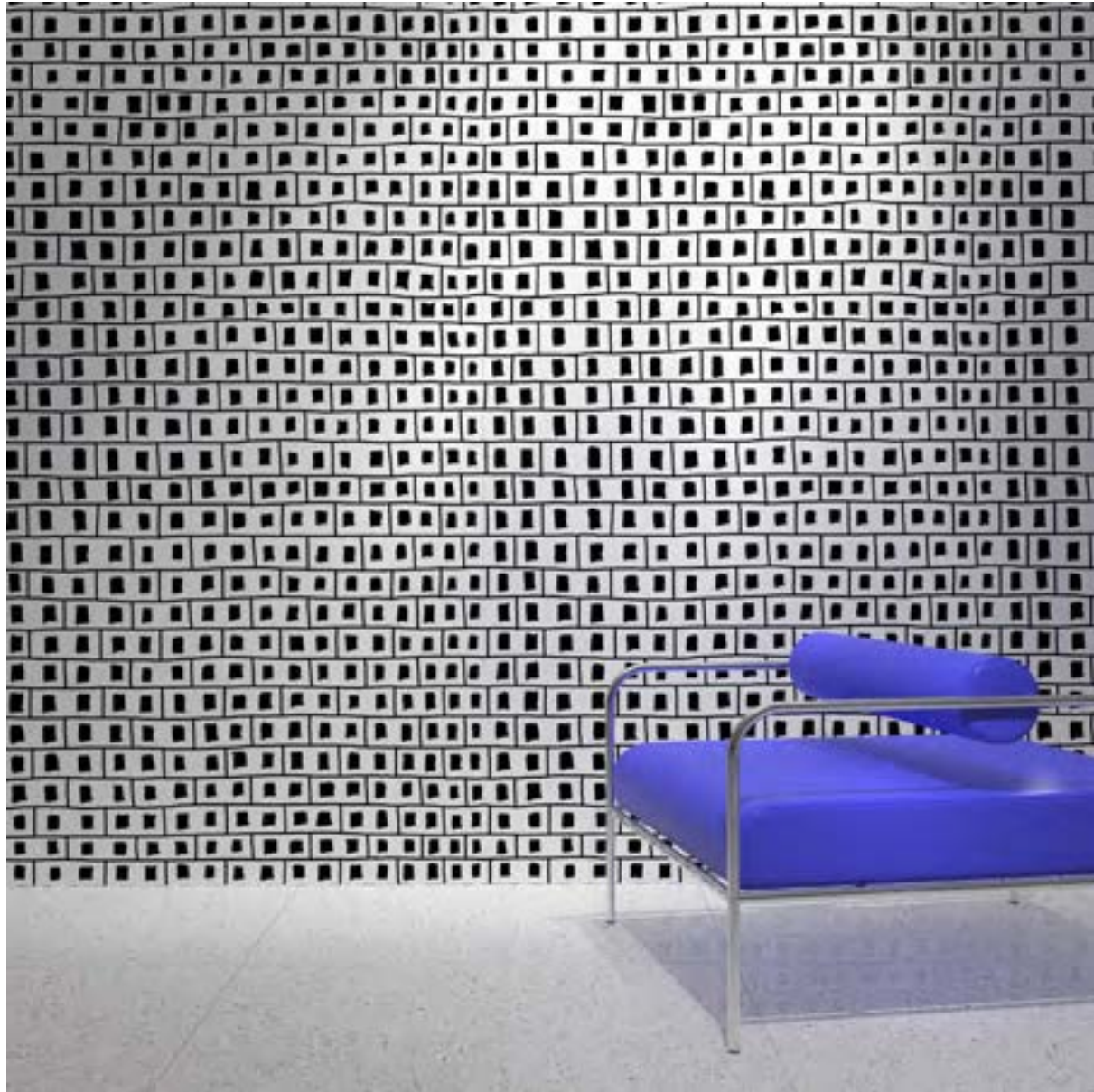
Dimensions: 62" x 96"



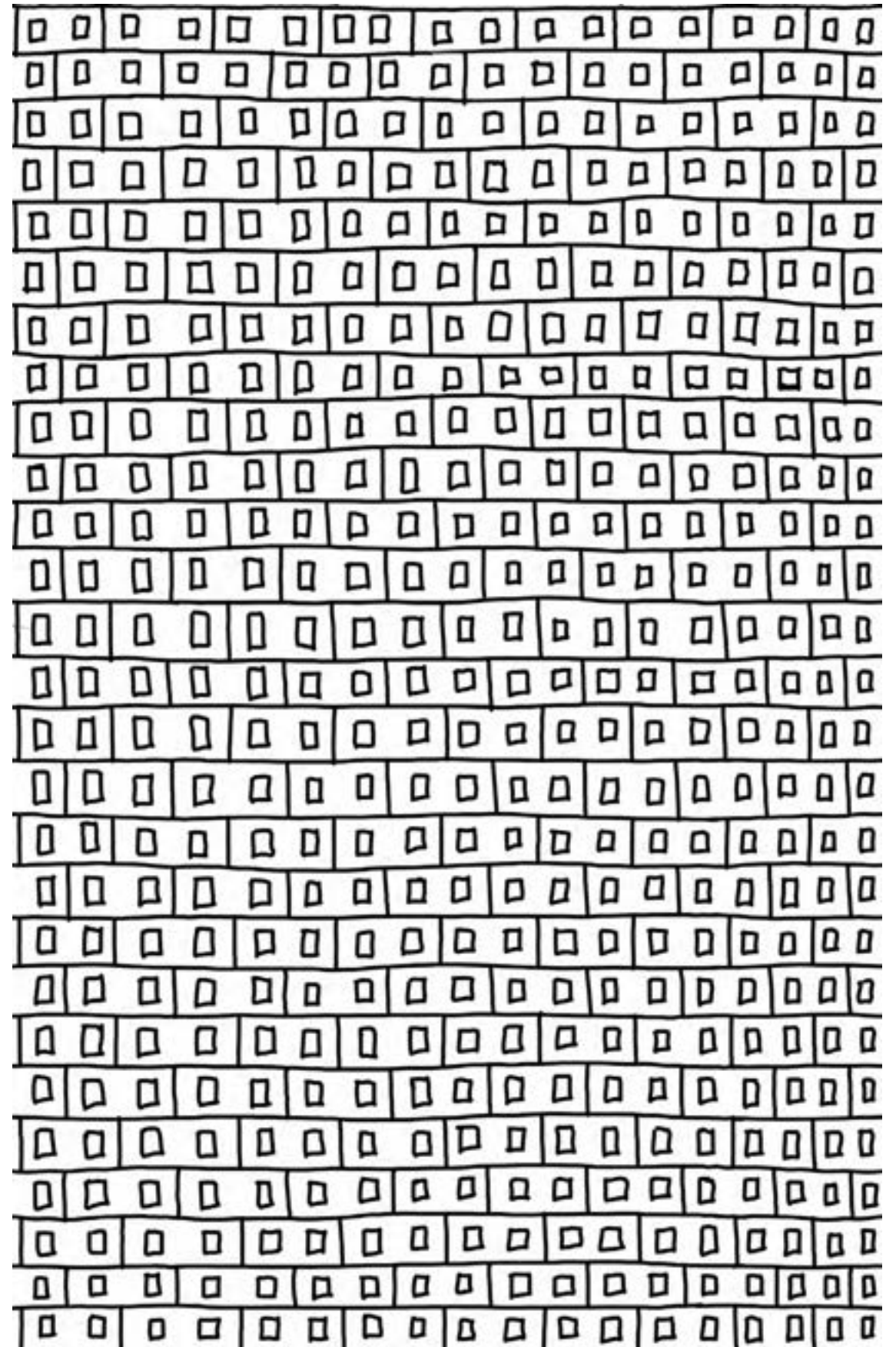
WALLPAPER # 007

BRICK WALL

Dimensions: 62" x 96"



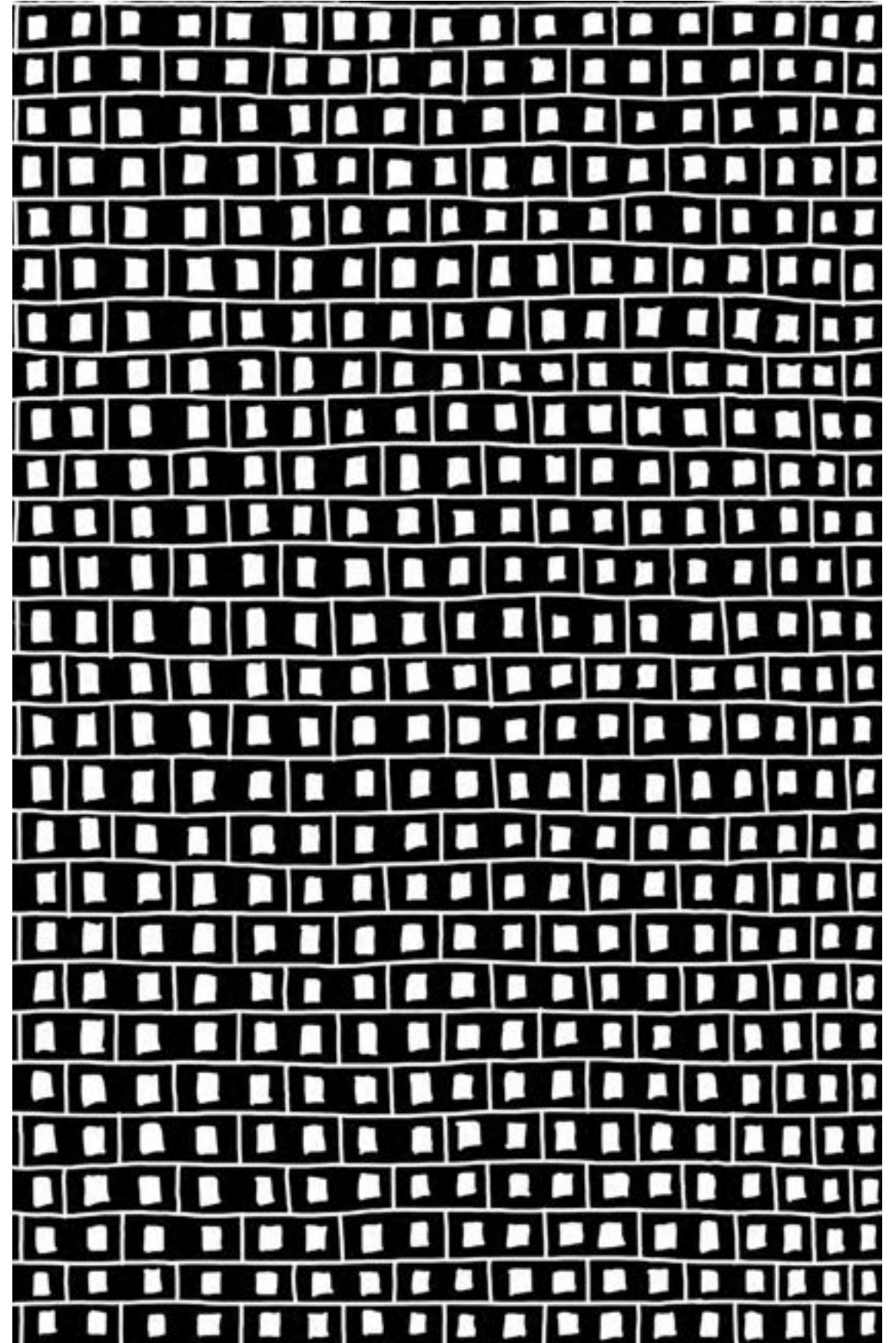
WALLPAPER # 008
BRICK WALL
Dimensions: 62" x 96"



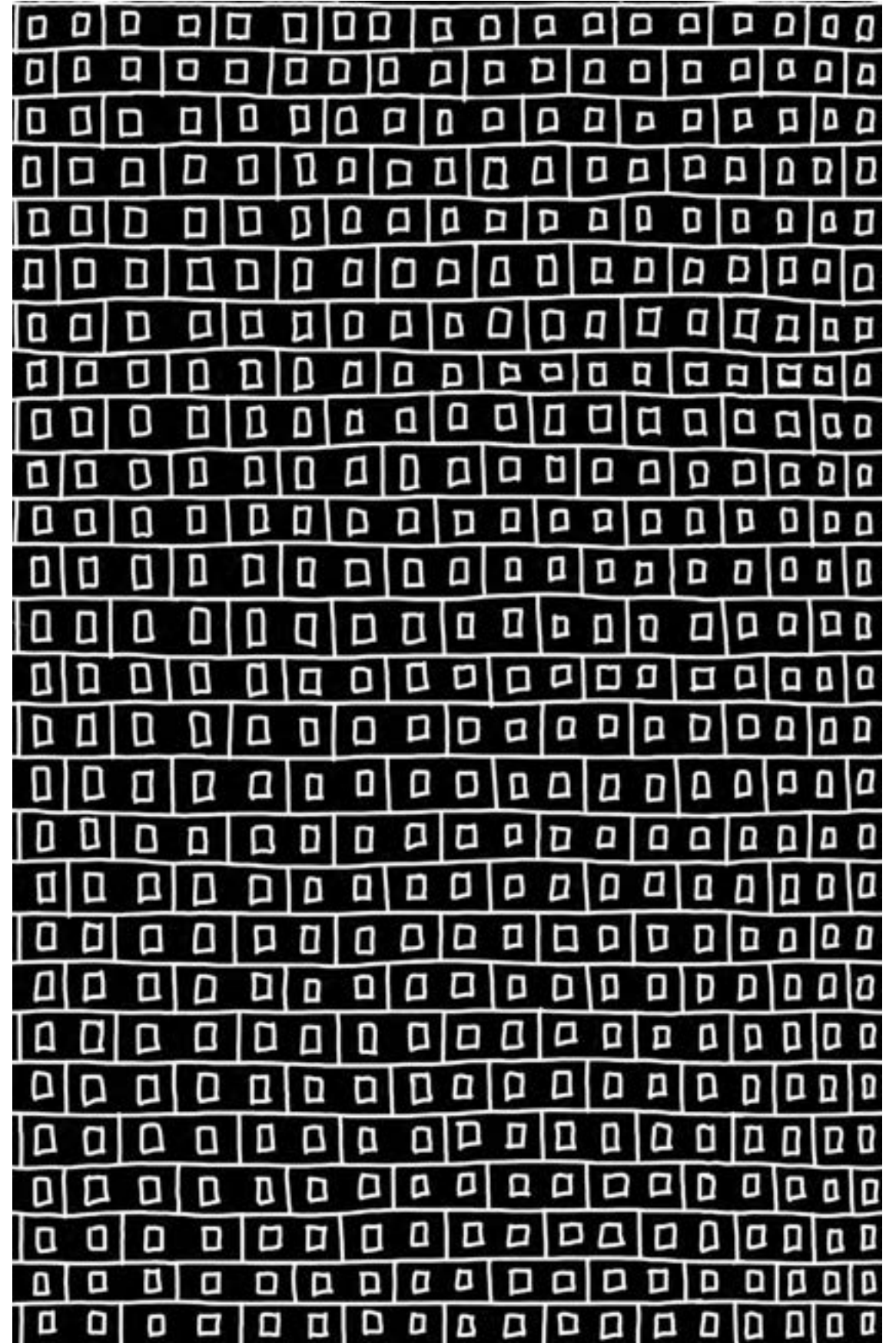
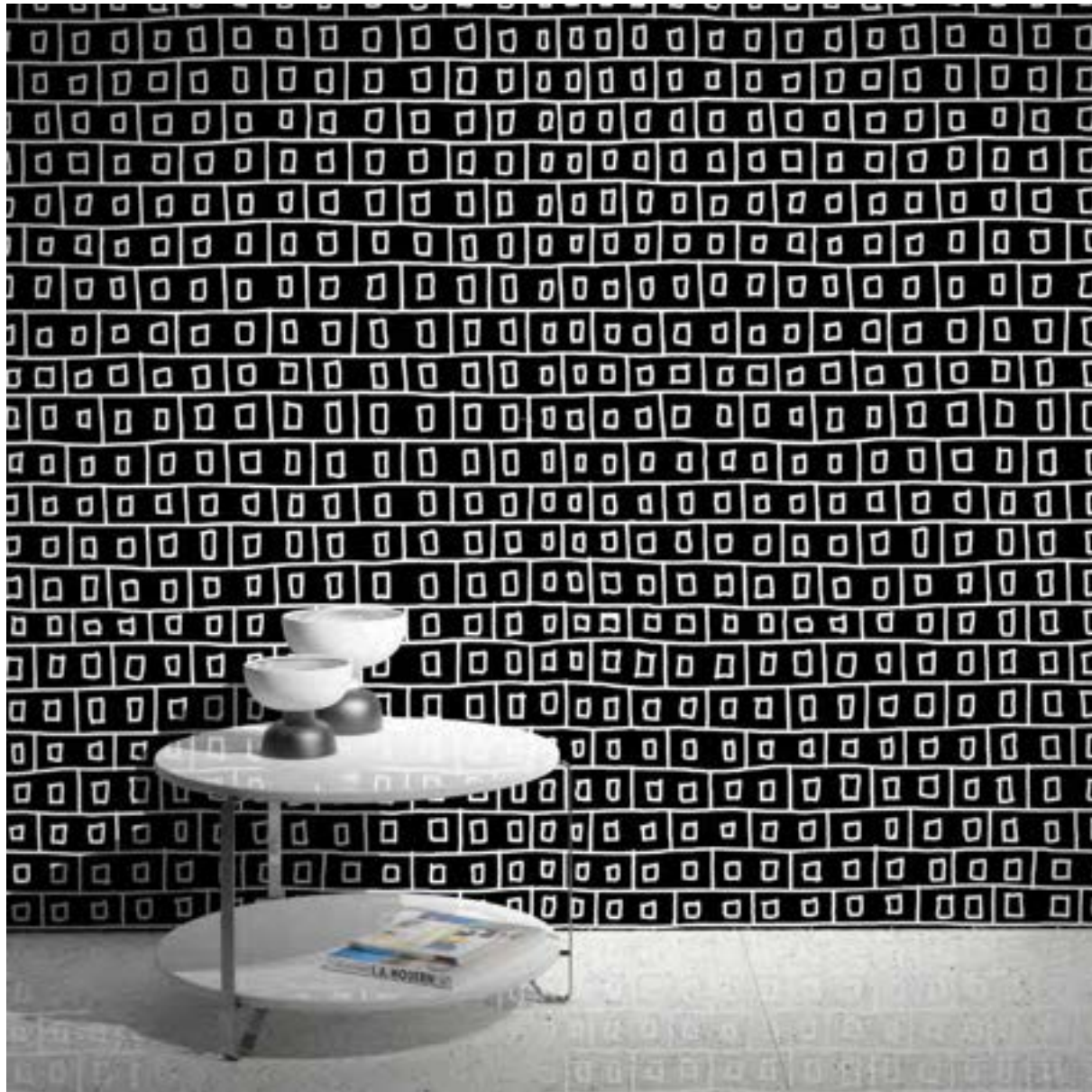
WALLPAPER # 009

BRICK WALL

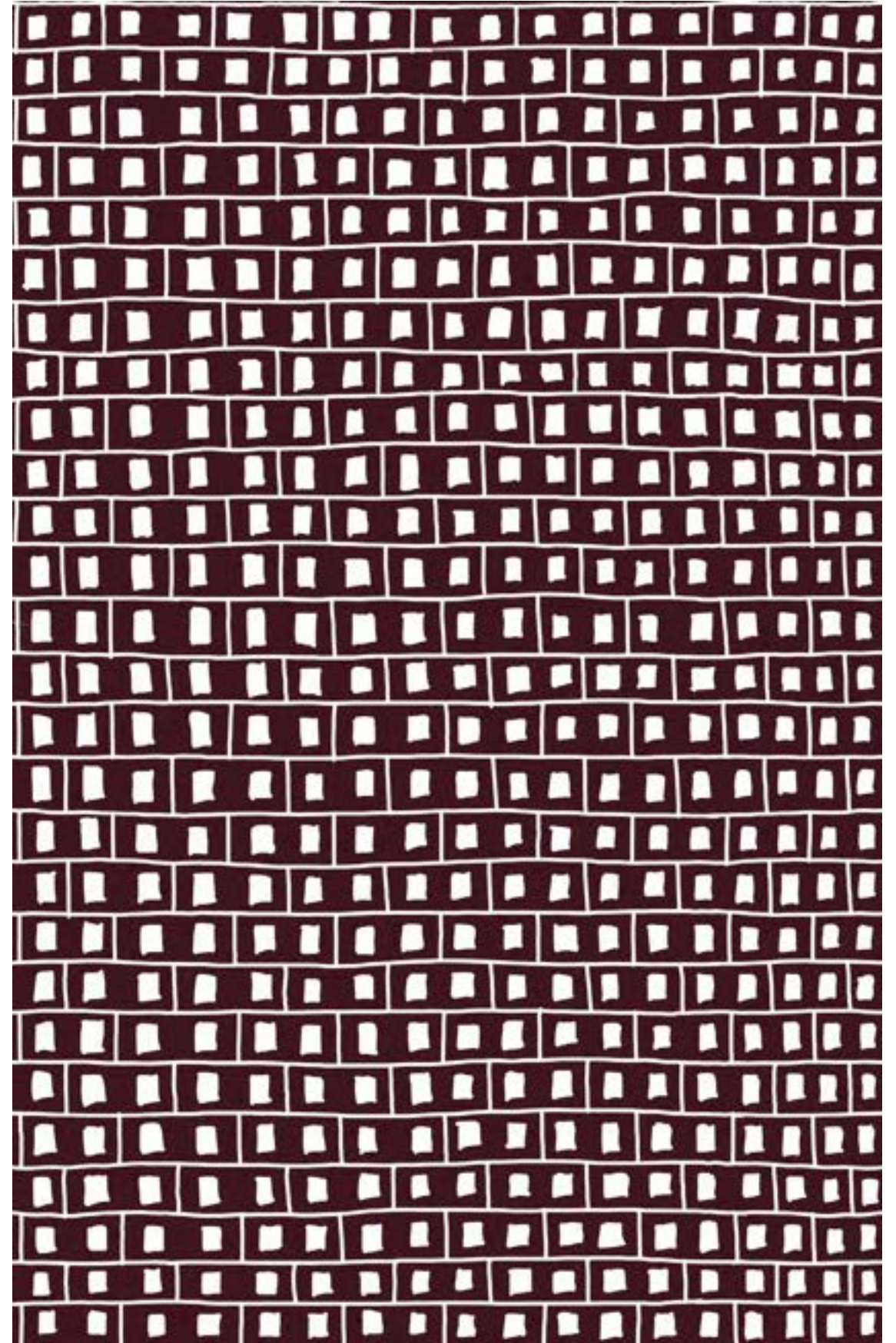
Dimensions: 62" x 96"



WALLPAPER # 010
BRICK WALL
Dimensions: 62" x 96"



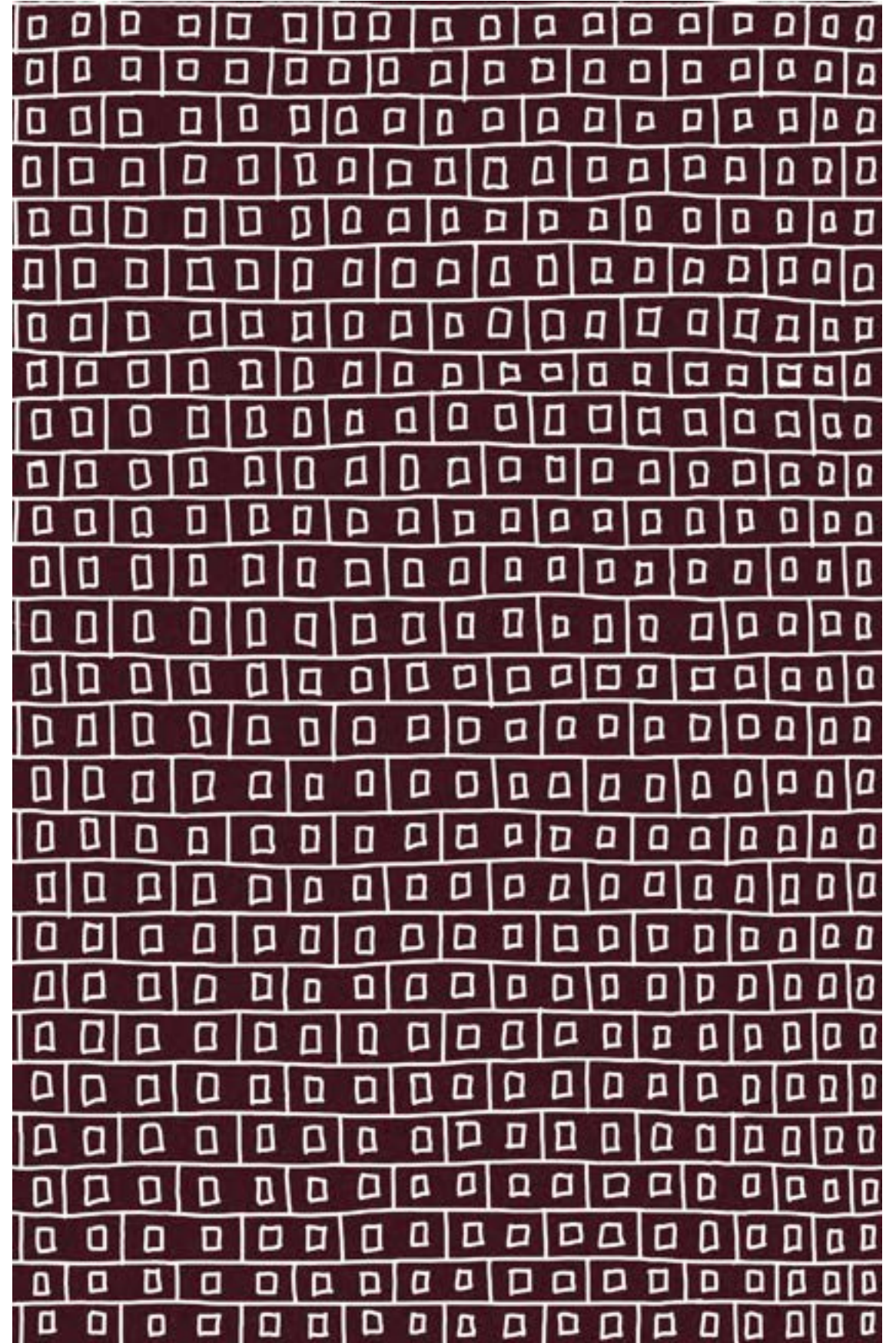
WALLPAPER # 011
BRICK WALL
Dimensions: 62" x 96"



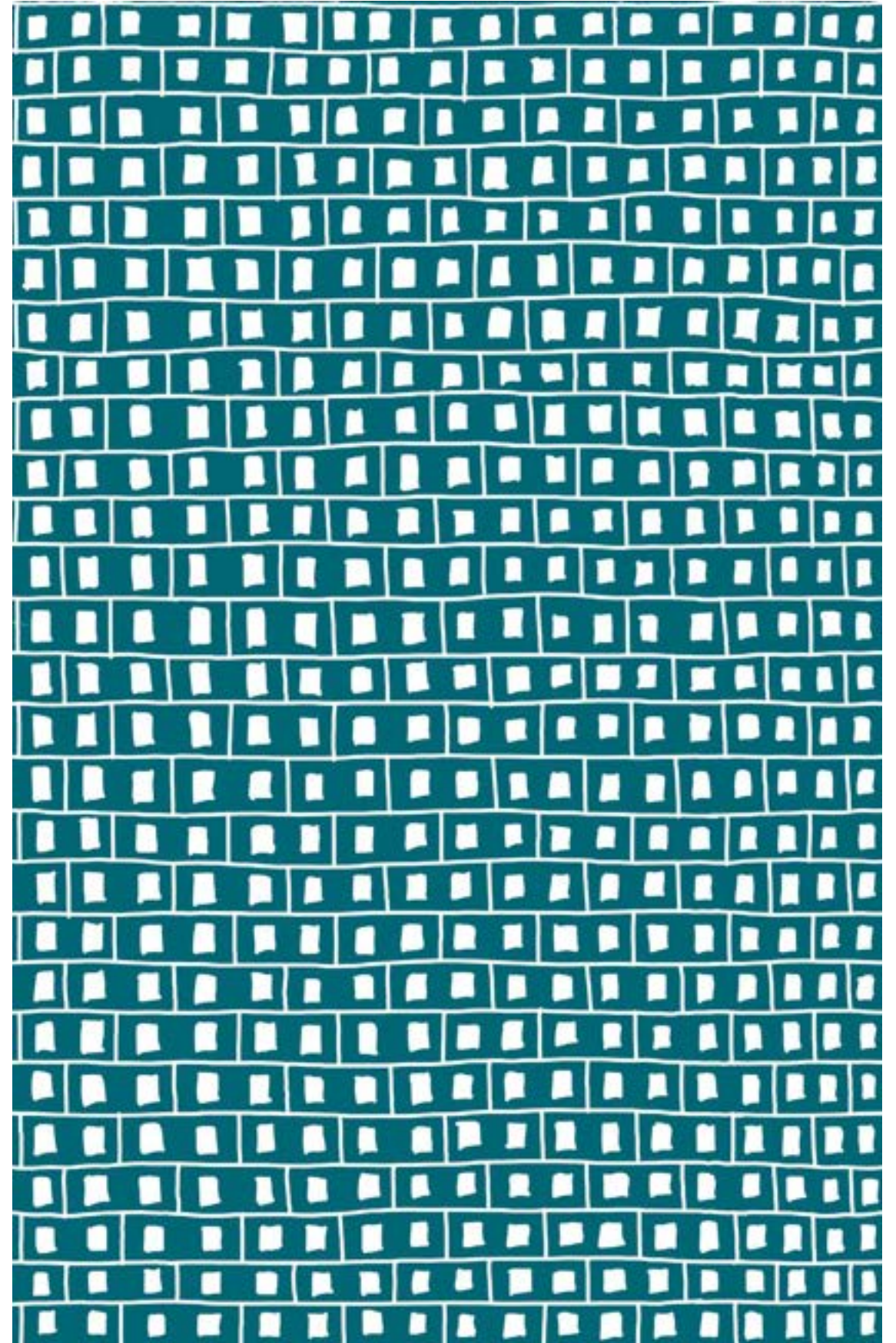
WALLPAPER # 012

BRICK WALL

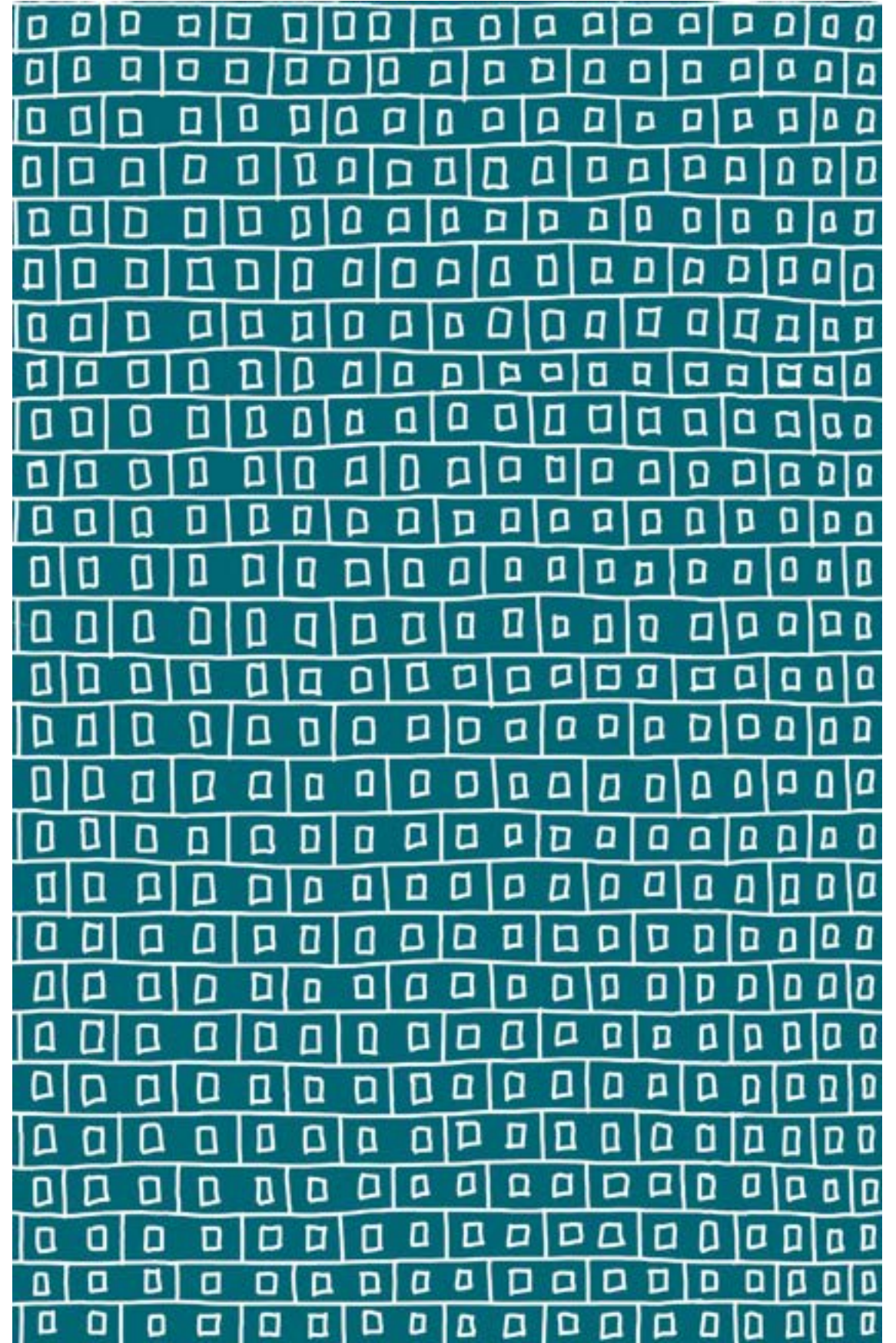
Dimensions: 62" x 96"



WALLPAPER # 013
BRICK WALL
Dimensions: 62" x 96"



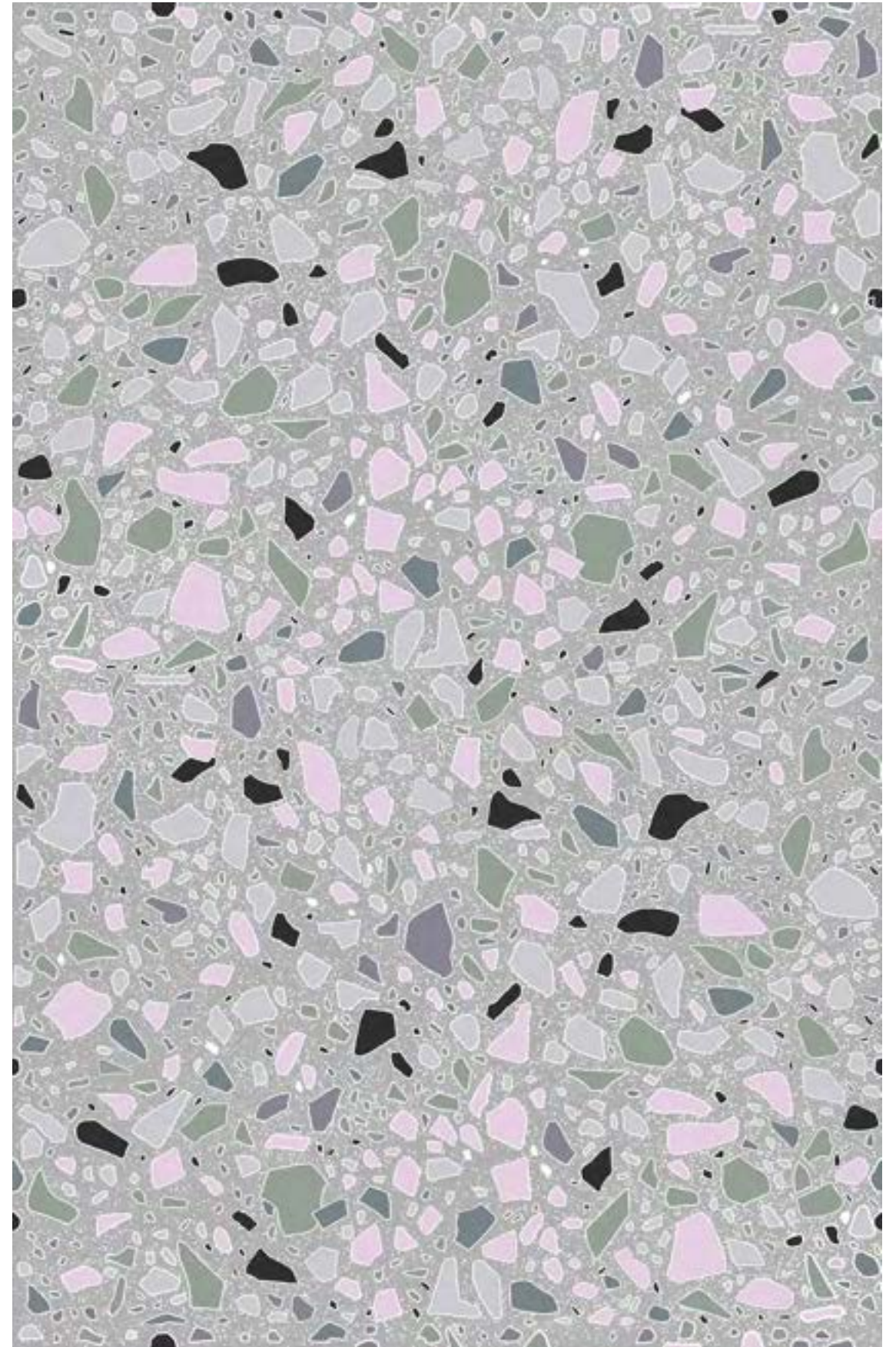
WALLPAPER # 014
BRICK WALL
Dimensions: 62" x 96"



WALLPAPER # 101

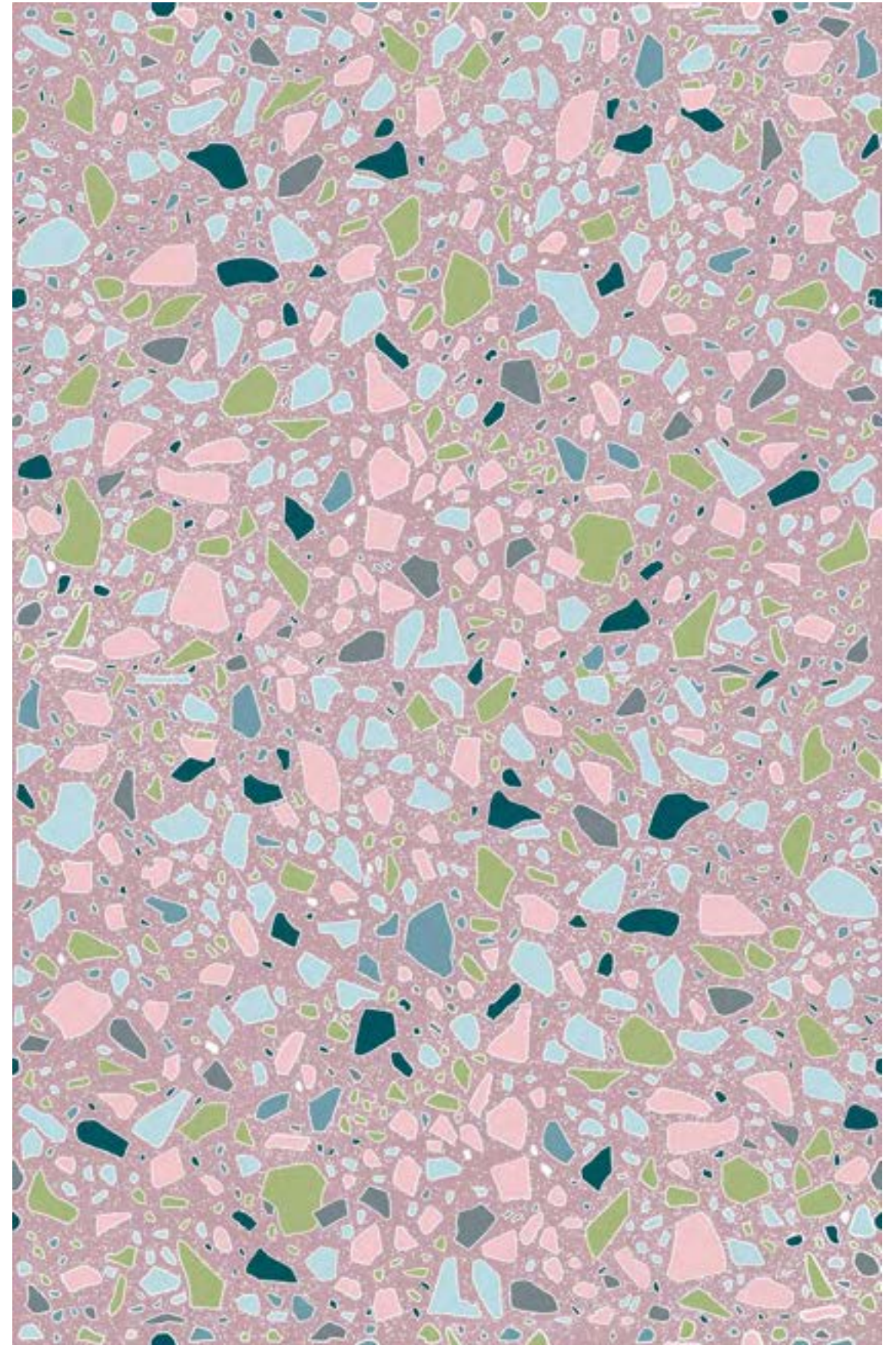
TERRAZZO

Dimensions: 62" x 96"



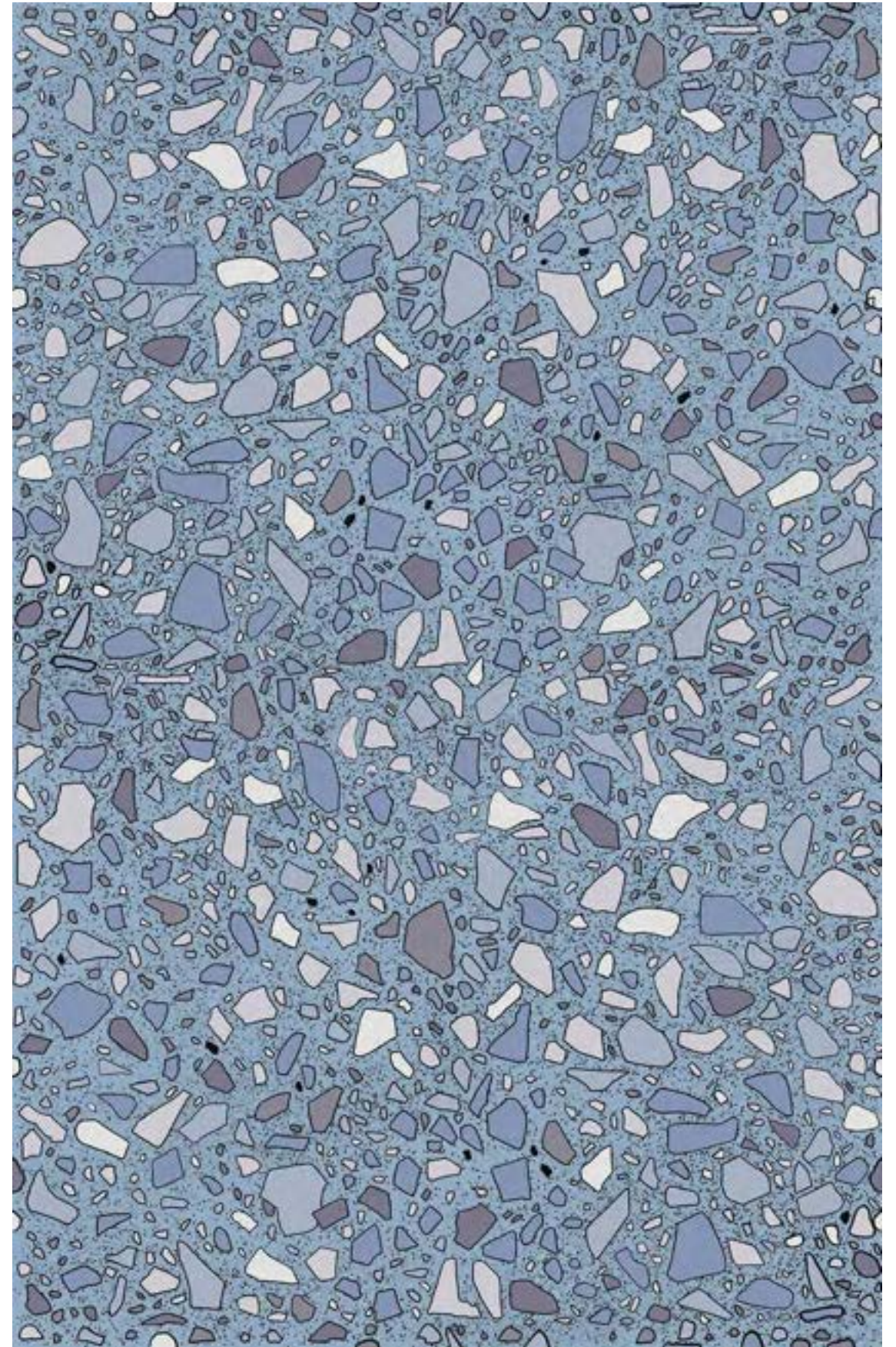
WALLPAPER # 102

TERRAZZO

Dimensions: 62" x 96"

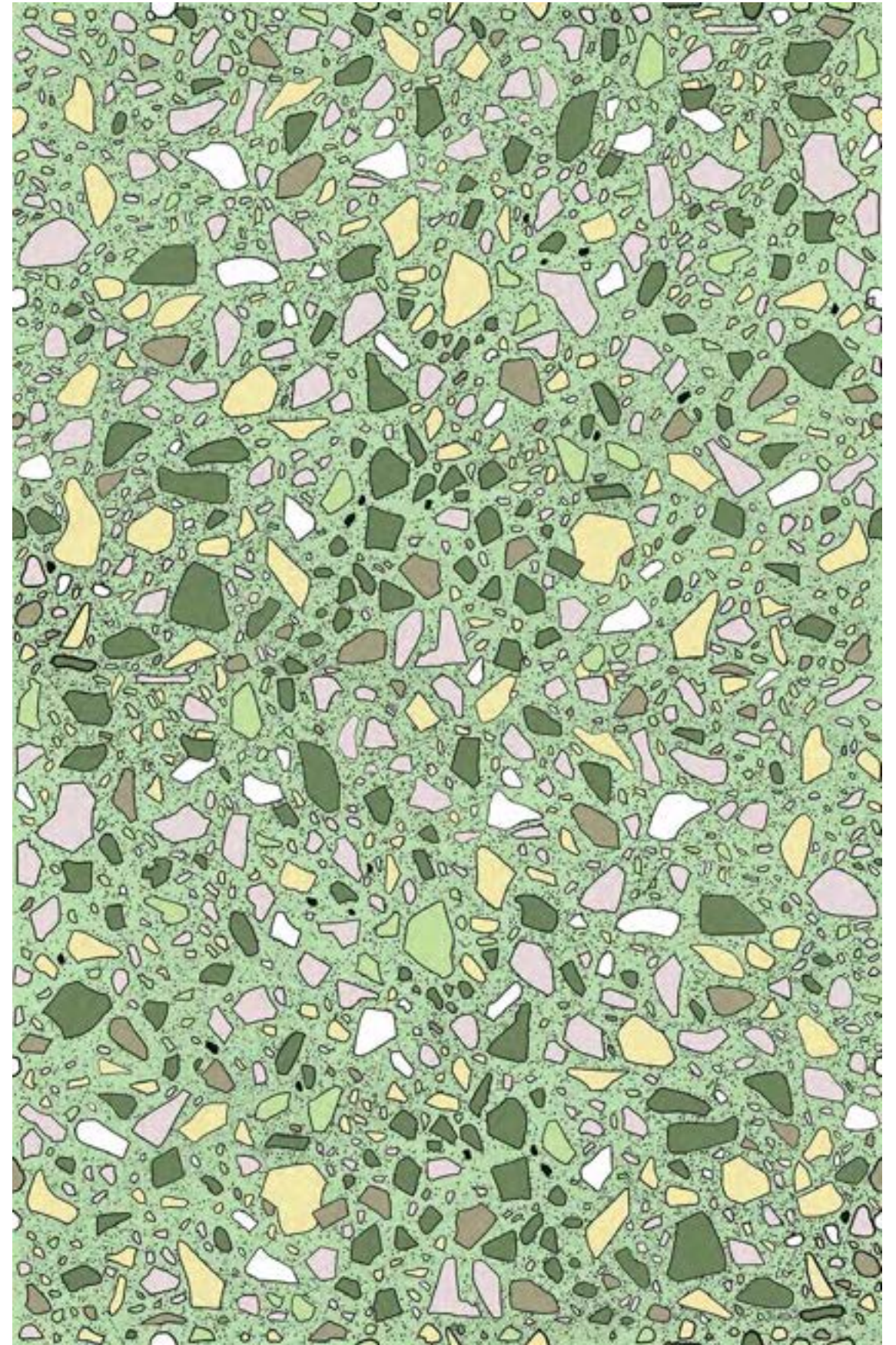
WALLPAPER # 103

TERRAZZO

Dimensions: 62" x 96"

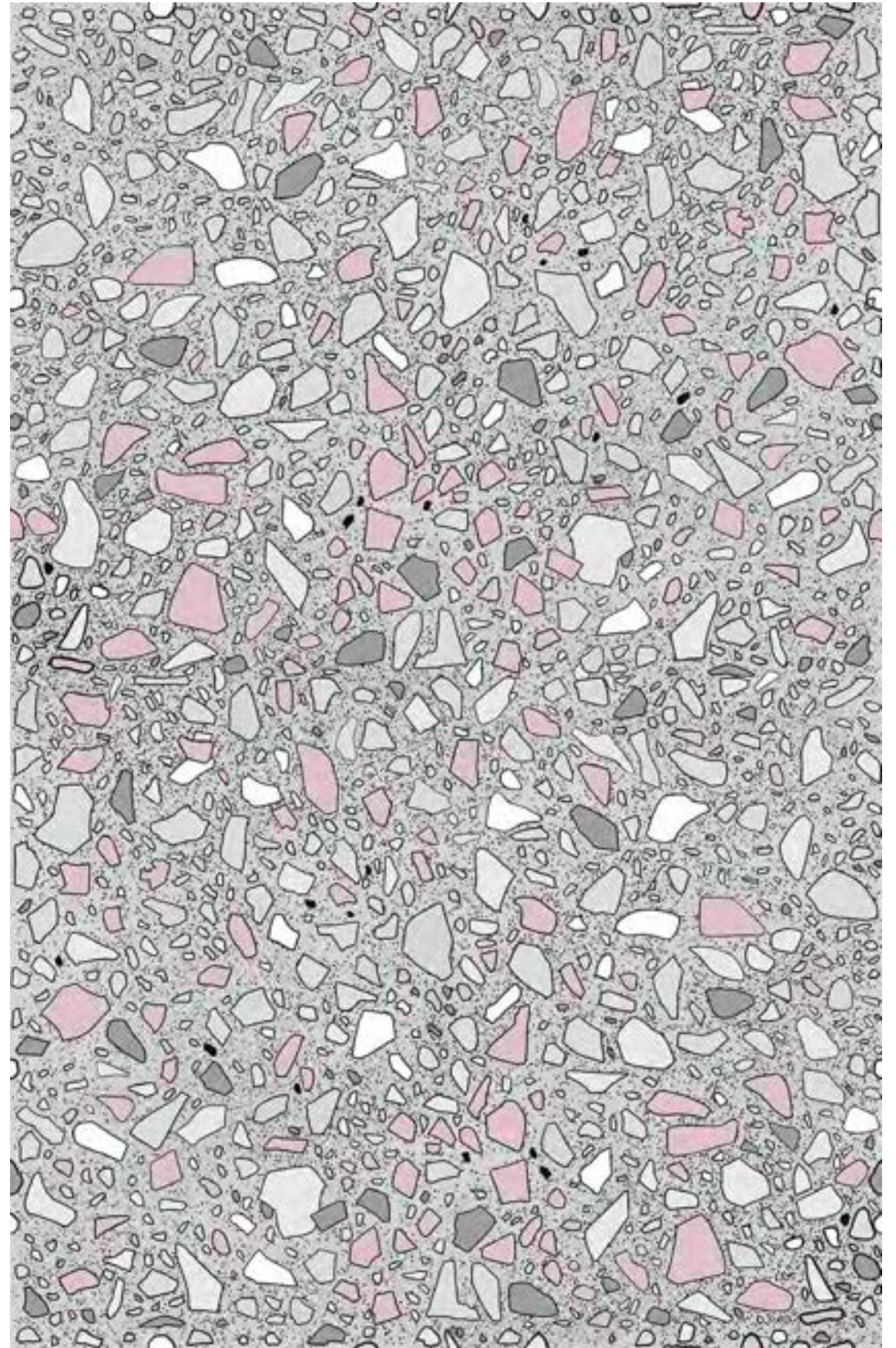
WALLPAPER # 104

TERRAZZO

Dimensions: 62" x 96"

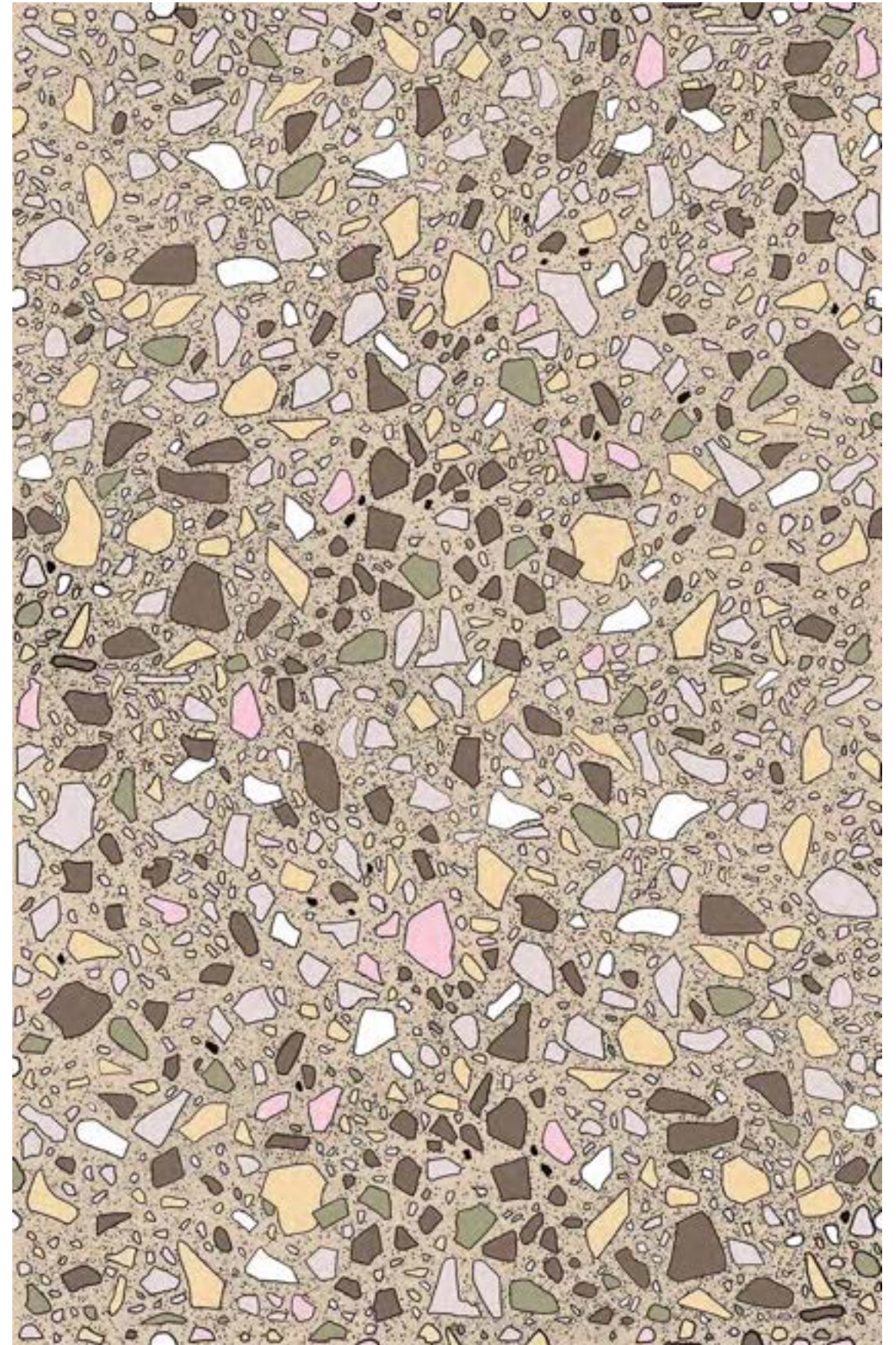
WALLPAPER # 105

TERRAZZO

Dimensions: 62" x 96"

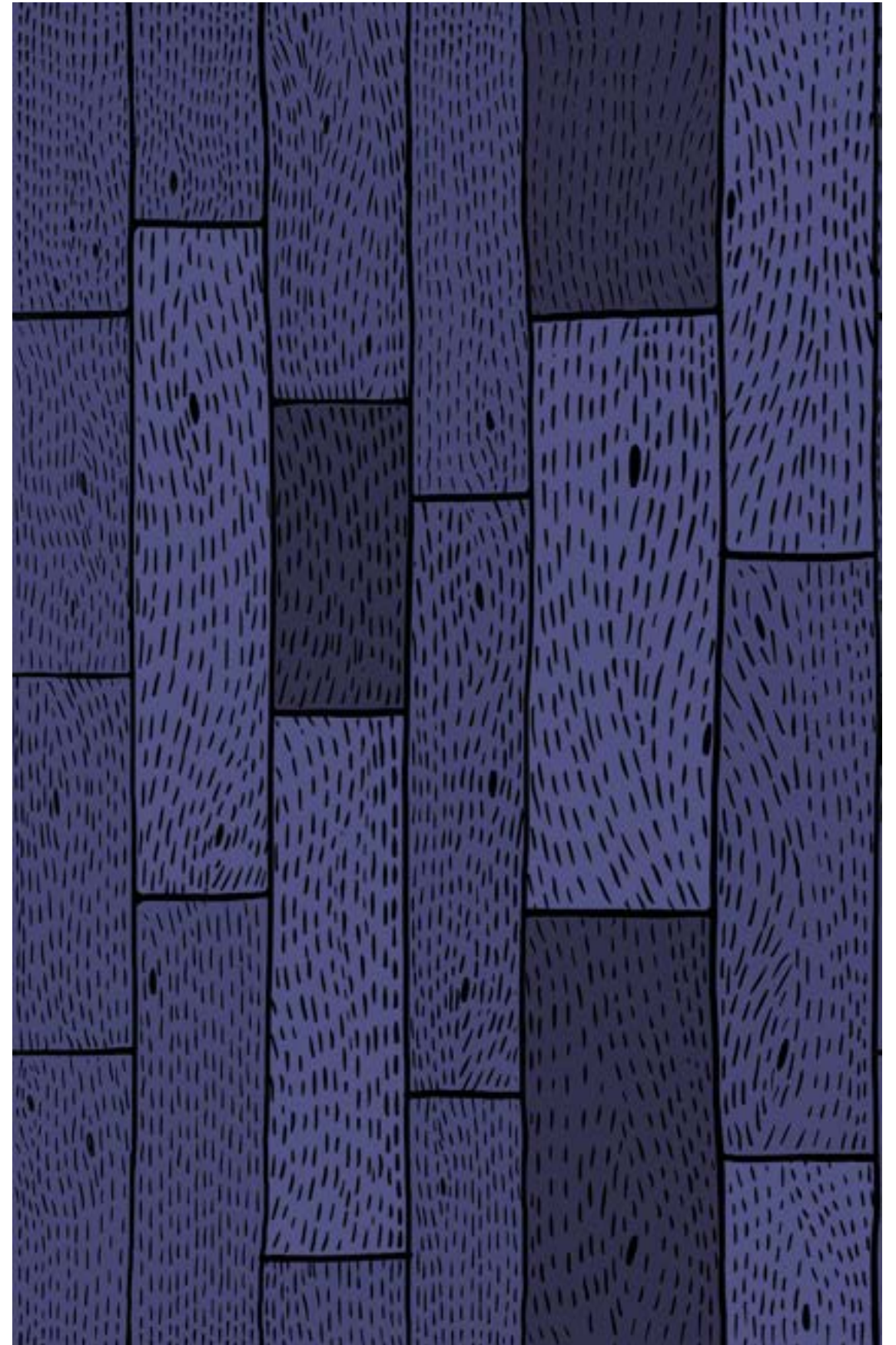
WALLPAPER # 106

TERRAZZO

Dimensions: 62" x 96"

WALLPAPER # 201
WOOD

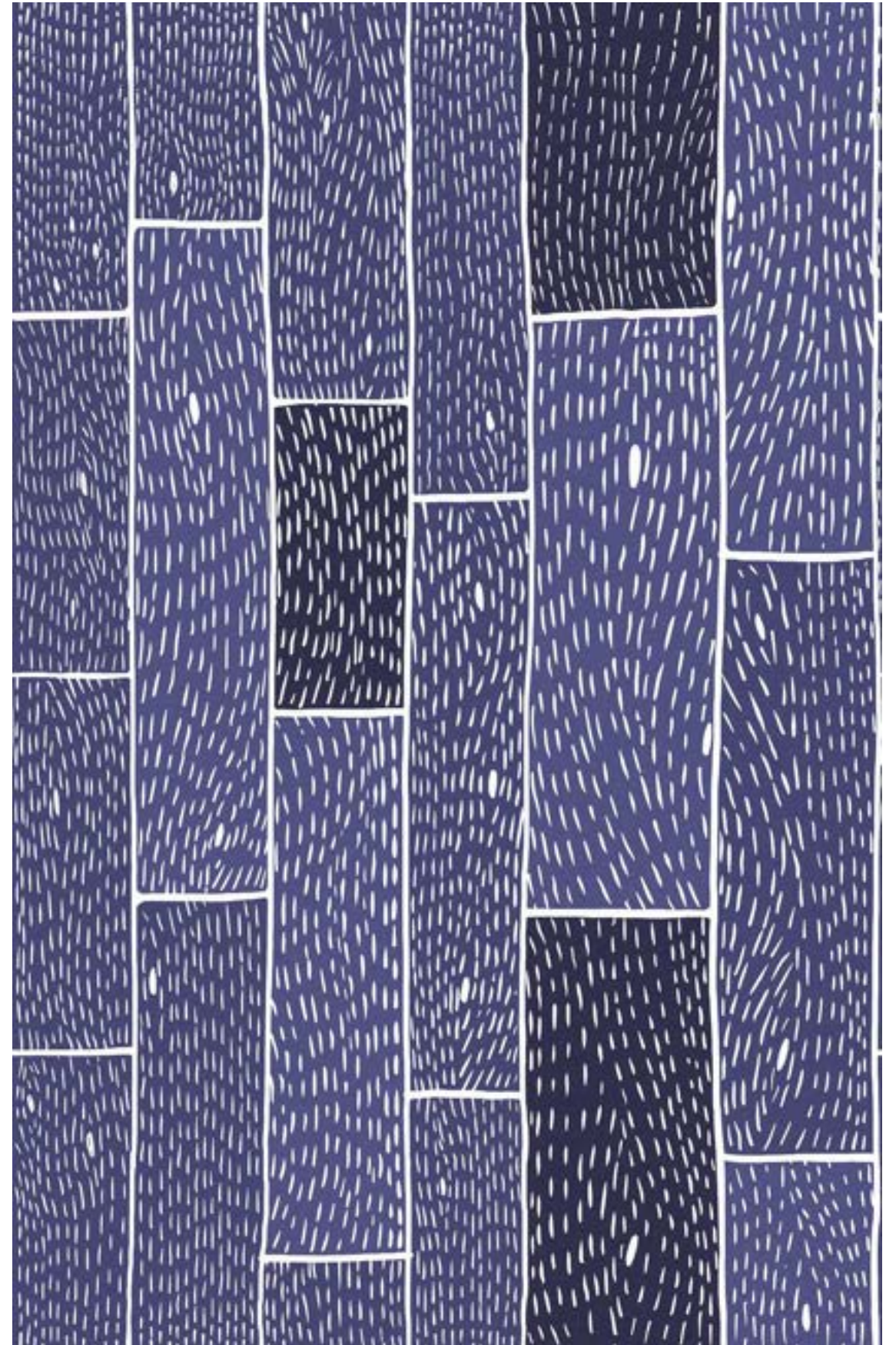
Dimensions: 62" x 96"



WALLPAPER # 202

WOOD

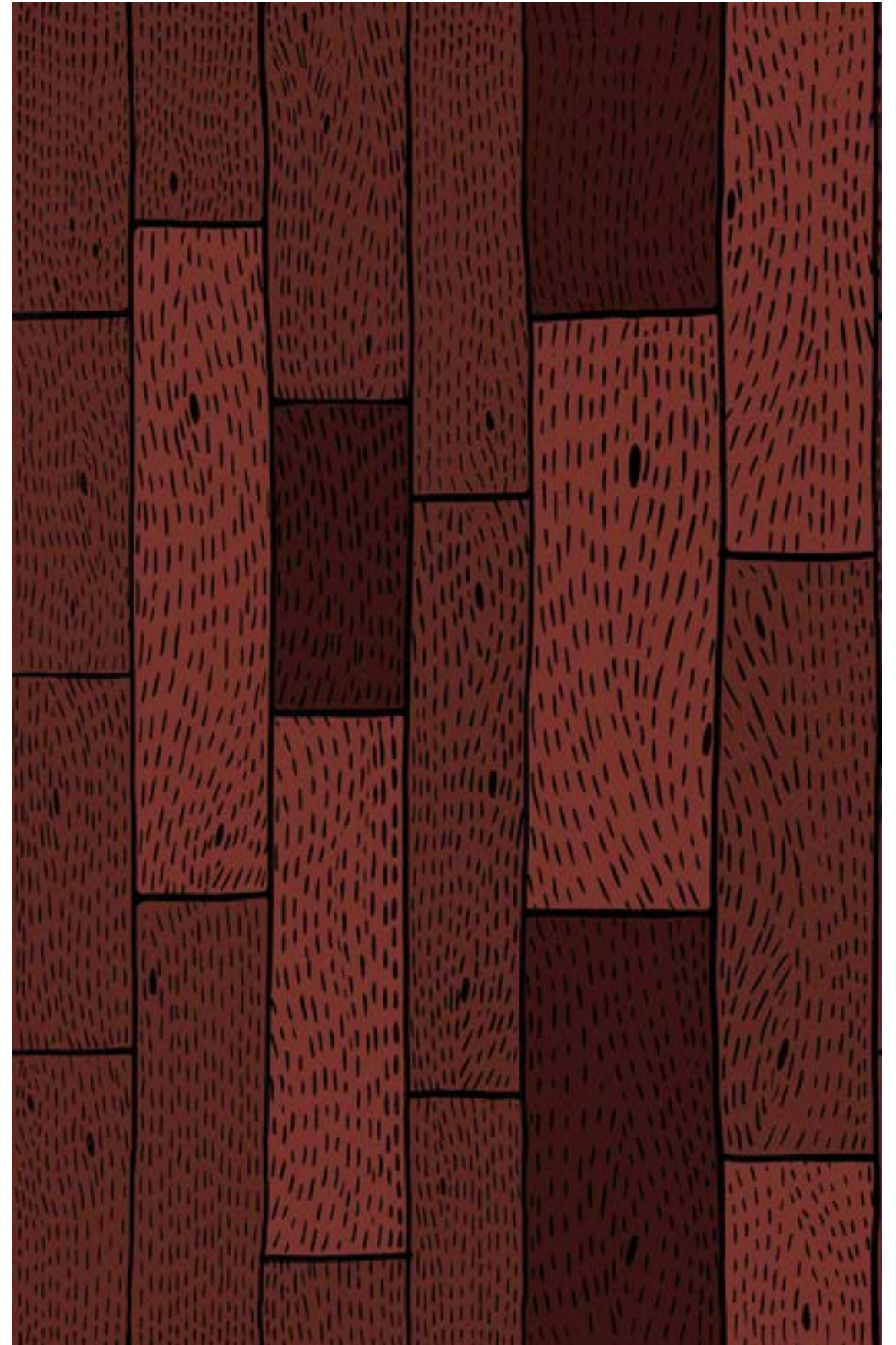
Dimensions: 62" x 96"



WALLPAPER # 203

WOOD

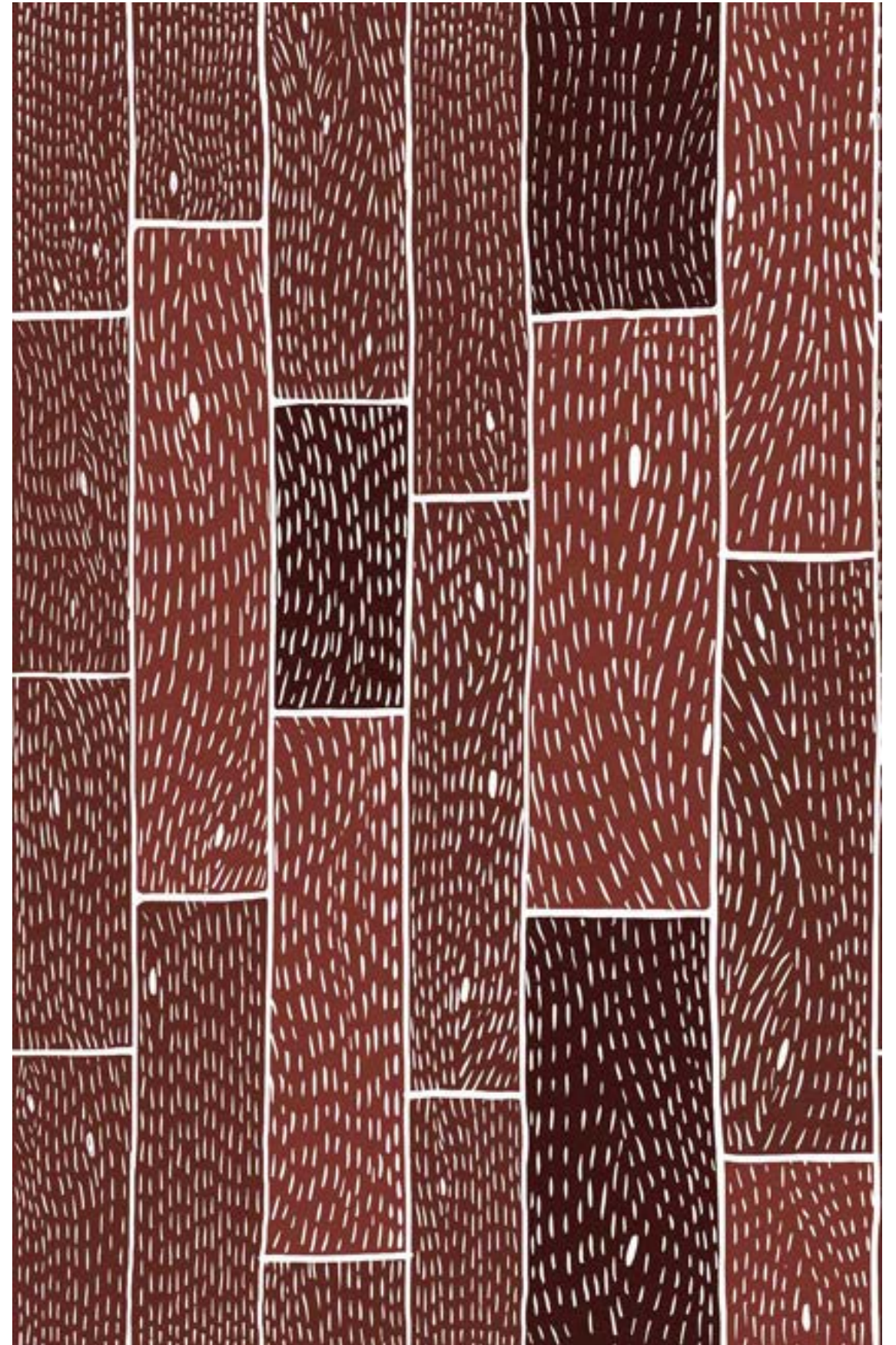
Dimensions: 62" x 96"



WALLPAPER # 204

WOOD

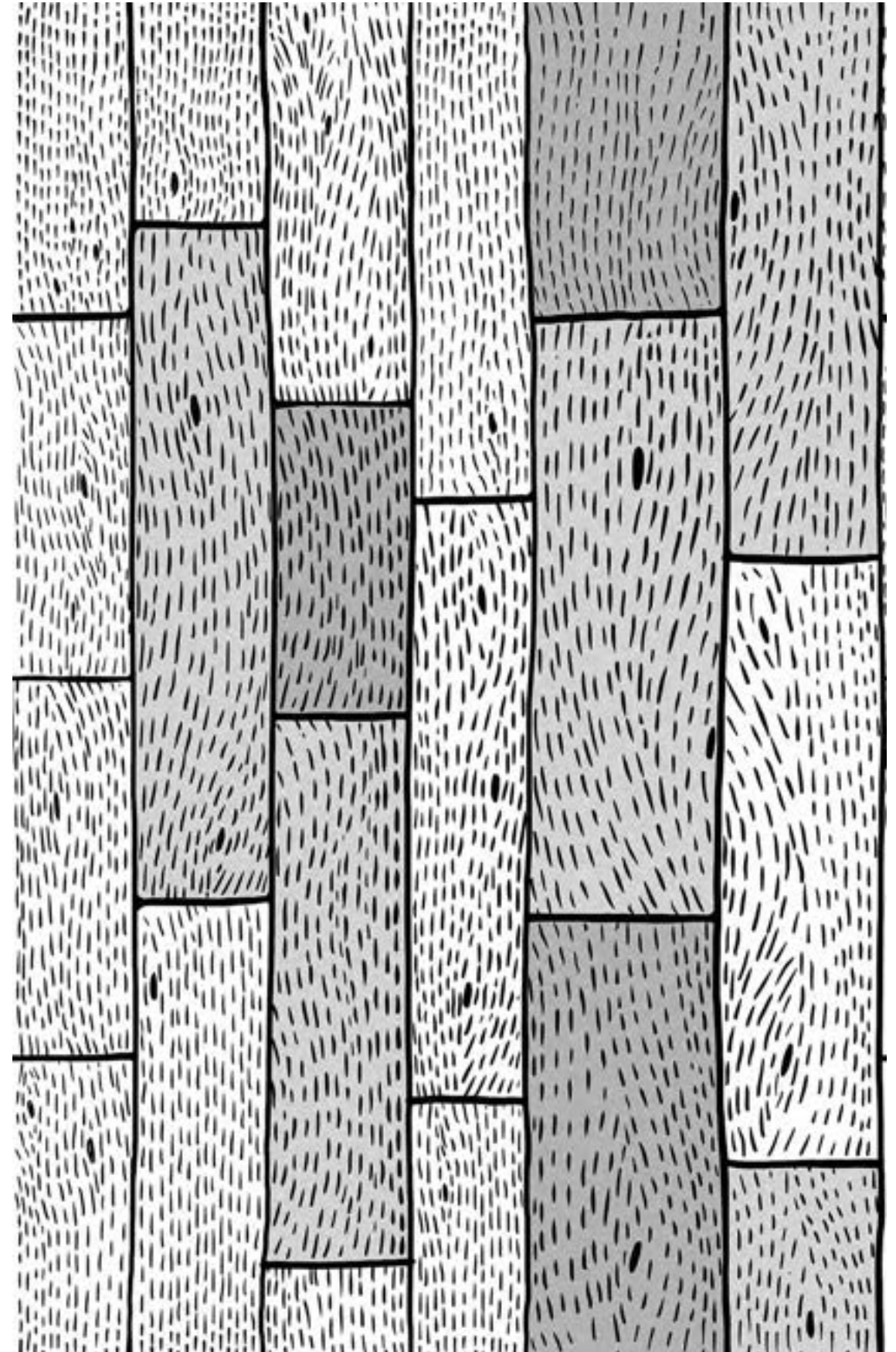
Dimensions: 62" x 96"



WALLPAPER # 205

WOOD

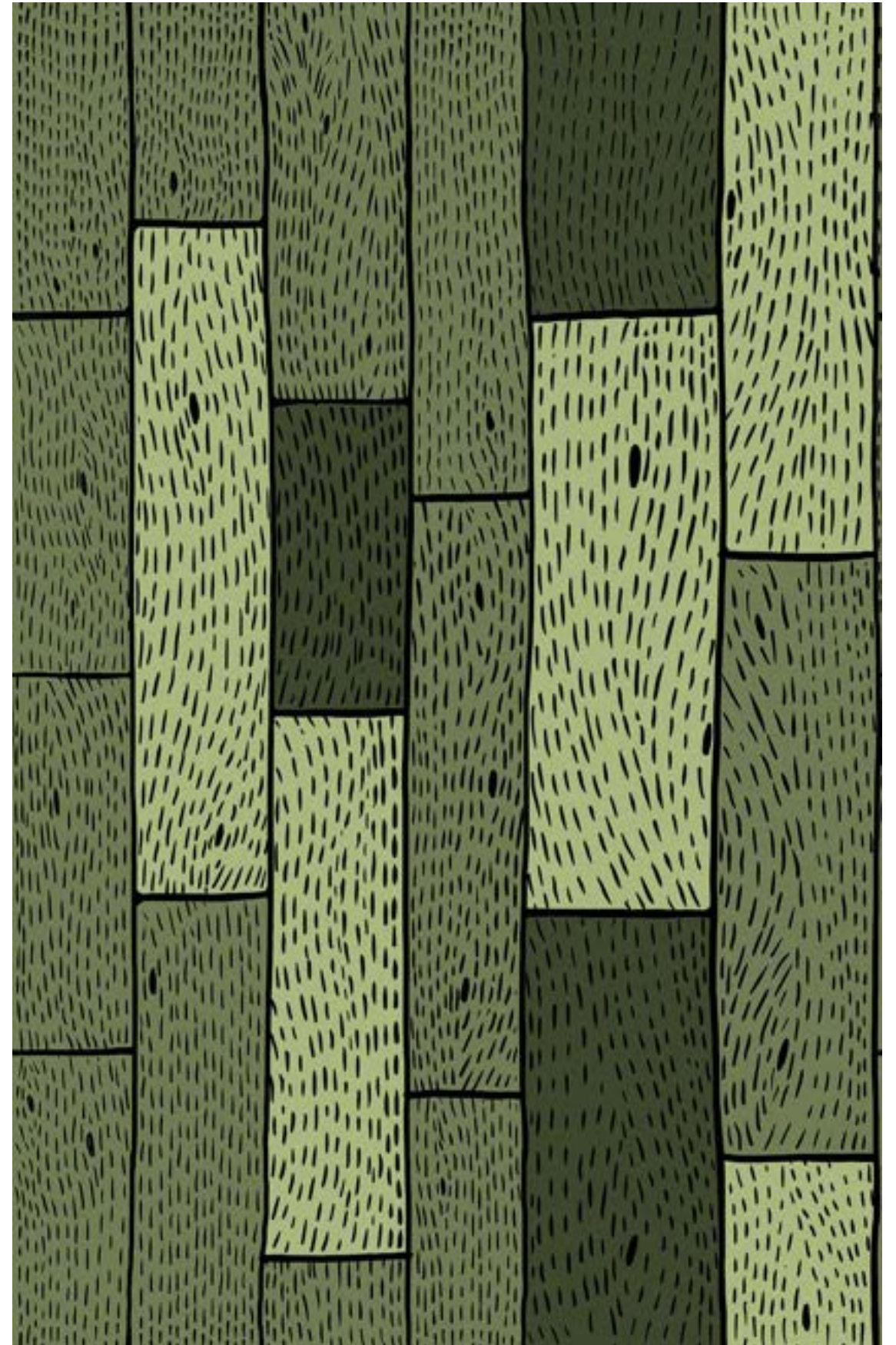
Dimensions: 62" x 96"



WALLPAPER # 206

WOOD

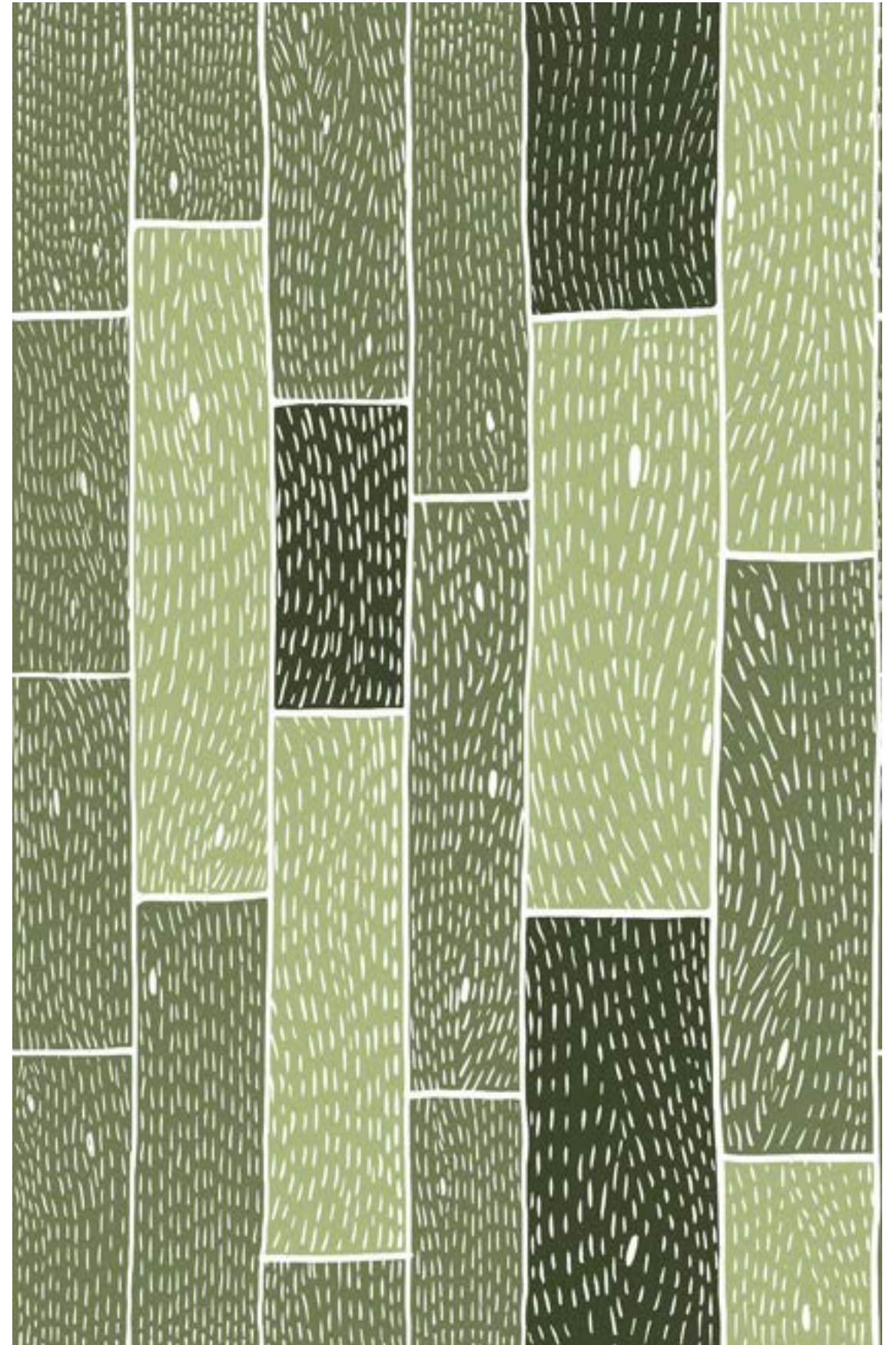
Dimensions: 62" x 96"



WALLPAPER # 207

WOOD

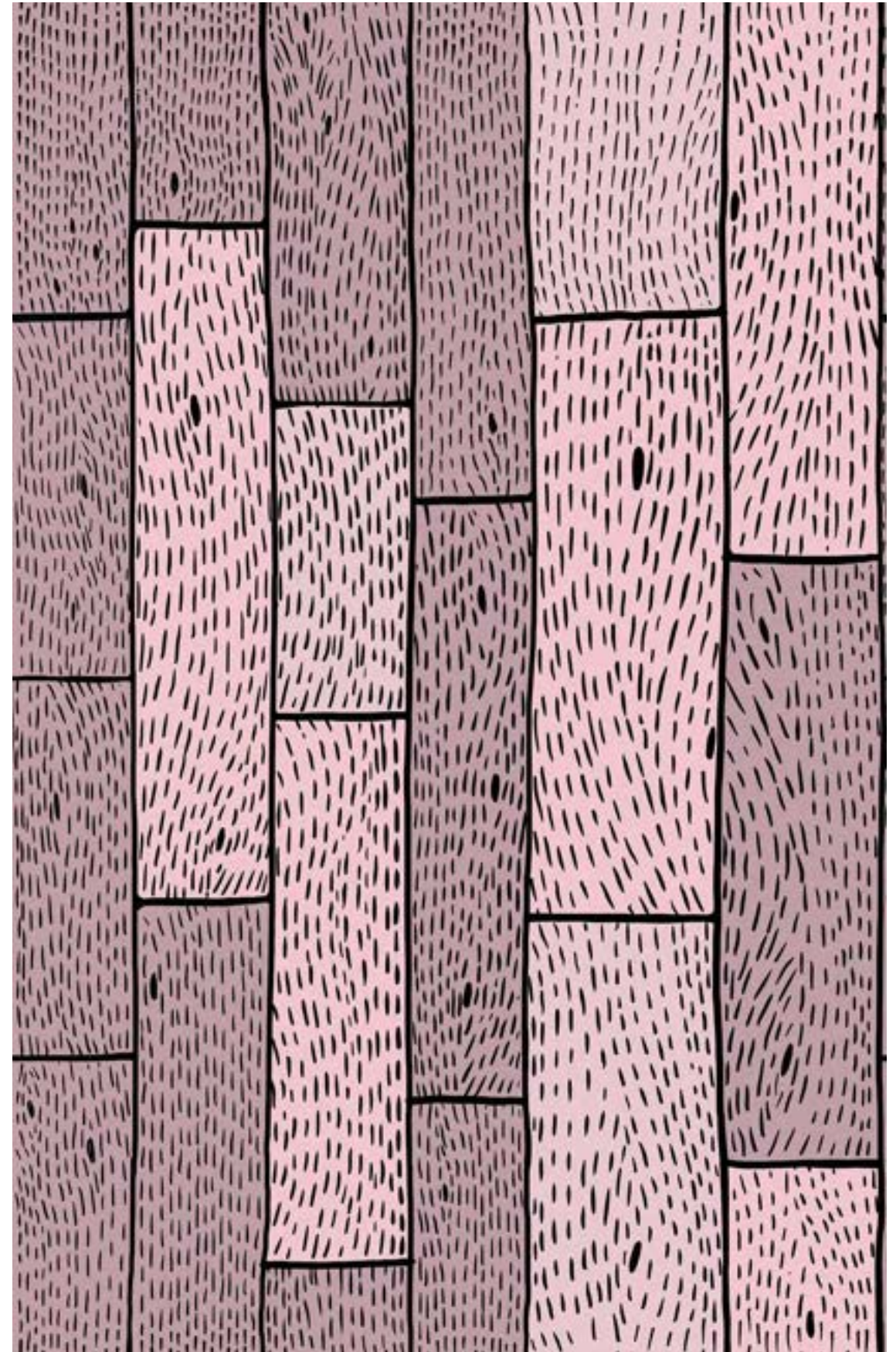
Dimensions: 62" x 96"



WALLPAPER # 208

WOOD

Dimensions: 62" x 96"



“Sergio Mannino Studio’s roots in Italian design culture shines through in its projects. The firm uses a bold palette to create distinctive environments that channel the Memphis Group—and other influences unafraid of a little color—with an aesthetic that is uniquely its own”

Surface Magazine



ROLLOUT