

ROLLOUT + CRYSTALWORKS

LOOKBOOK



C O R E F R E Q U E N C I E S

W A L L P A P E R C O L L E C T I O N



Photography: Eluvier Acosta, Creative Direction/Styling: Carl Abad

Malachite Garden (Green) C-0291.01

CORE FREQUENCIES

Rollout is pleased to partner with Crystalworks to launch a broad assortment of geologically inspired wallpapers that capture the vibrational energy of crystals and bring interior walls to life.

The **Core Frequencies** Collection presents high-resolution graphics showcasing the luscious, glittering shapes and colours of planet Earth's ultra-slow-growth creations. From sparkling facets to swirling ribbons to brooding shadows and jagged formations, these expressive and eye-catching images offer professional designers a range of options to create bold and exciting spaces.

rollout.ca/collections/core-frequencies

ROLLOUT

Rollout is a Canadian-owned wallpaper design studio that supplies bespoke custom wallcoverings for the North American Architectural and Interior Design trade. Since 2005, we've provided dynamic, customized, brand-aware patterns and murals to a range of commercial clients. Our eco-appropriate materials and bold designs deliver vibrant, sensational, and practical solutions for restaurants, hotels, schools, offices, and clients in need of something extra special. Our catalogue is anchored with eye-popping graphics supplied by a roster of talented artists – people whose vision and commitment we value and cultivate by offering a generous perpetual royalty on all sales of their work. In everything we do, we strive to create a collaborative and caring work environment that nurtures artistic exploration and responsive customer service.

rollout.ca

CRYSTALWORKS

Based in Vancouver, Canada, and operating since 1984, Crystalworks is a world-class gallery trading in crystals, minerals, and fossils. Founded by the Lipsett family – Susie, Karen, and Andrea – the company supplies select crystals, mineral specimens, sculpture, jewelry, gem carvings, and related artwork to both Canadian and international clients.

For this collaboration, the instructions to Rollout were very specific: Only the natural colours and shapes of the crystals were to be represented, without digital corrections or alterations to the imagery. This is in keeping with the purpose of Crystalworks, which does not sell treated, dyed, man-made, or radiated crystals and minerals.

Gallery staff are friendly, knowledgeable, and passionate about sharing the joy, wisdom, and spiritual power of inner Earth's most dazzling creations. Now, thanks to Rollout, that same experience is available for anyone with an empty wall in search of something extraordinary.

crystalworks.ca

KRISTOPHER GRUNERT

Kris Grunert is an acclaimed photographer with over 20 years of experience capturing the intersection of humanity, technology, and the natural world. His recent work explores the inner landscapes of crystals – revealing the intricate, living energy of geodes through extreme close-up photography.

Using a high-powered lens inside a custom mini photo box, Grunert stabilizes his camera on a precision cut-out to zoom deep into the crystalline forms. The result is a series of hyper-detailed 4K stills that highlight each geode's distinct edges, patterns, and subtle vibrations – each resonating at its own unique frequency.

From topaz to tiger stripe iron and amethyst, Grunert's images evoke the timelessness and energetic essence of Earth's mineral life. His photographs invite viewers to experience the aliveness of crystals as luminous, healing presences echoing through geologic time.

grunertimaging.com





Celestite Crunch (Ocean Spray) C-0263.01

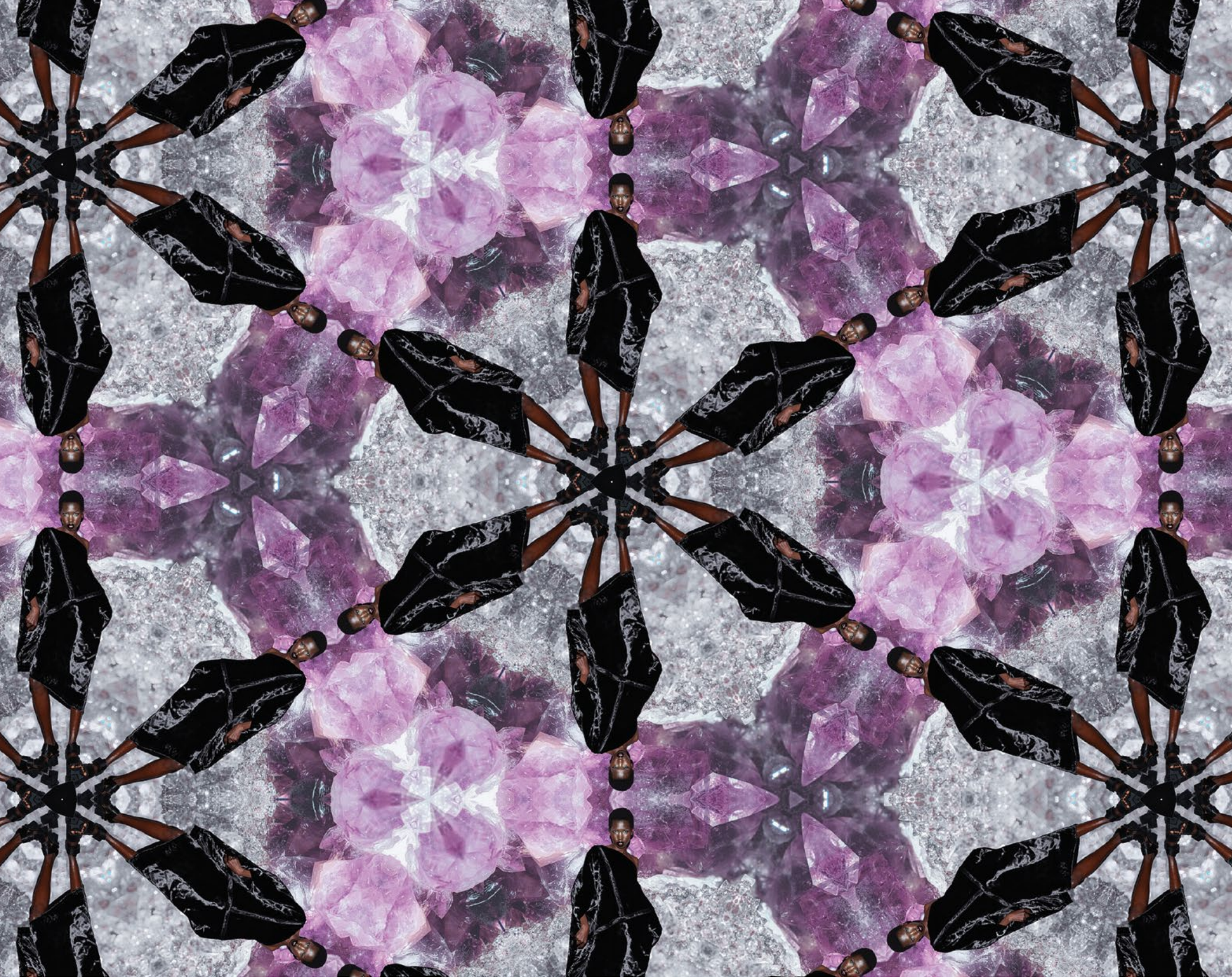
Amethyst Calcite Crunch (Raspberry) C-0260.01





Citrine Cathedral (Bronze) C-0267.01





Photography: Eluvier Acosta, Creative Direction/Styling: Carl Abad

Apatite Fissure (Navy) C-0261.01



Bloom Macro (Amethyst) C-0186.01



The mineral *Picture Jasper* is believed to bring harmony and stimulates creative visualization.

A well-placed slice through the stone reveals this completely natural interior that evokes a mystical desert landscape.





Chlorite Crunch Macro (Light) C-0265.01



Golden Healer (Orange) C-0276.01

Fluorite Cubit (Teal) C-0274.01





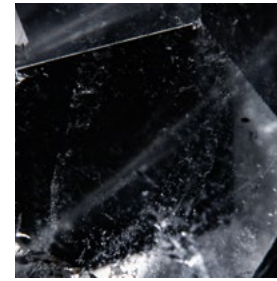


Smoky Crunch Macro (Quartz) C-0287.01

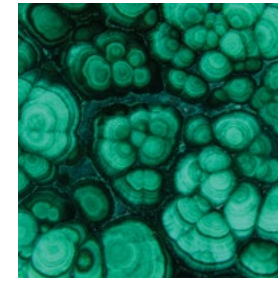
**SCAN HERE TO EXPLORE
ALL THE CORE FREQUENCIES
PATTERNS AND REQUEST
SAMPLES TODAY.**



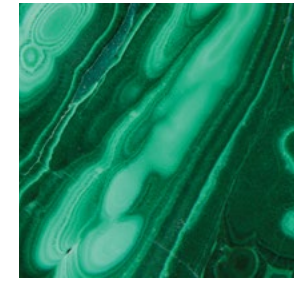
**Tiger Stripe
(Iron) C-0289.01**



**Depth of Field Trip
(Black) C-0290.01**



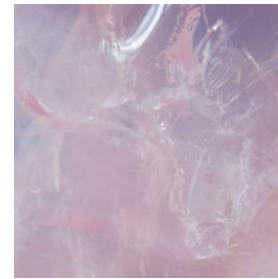
**Malachite Garden
(Green) C-0291.01**



**Malachite Landscape
(Green) C-0292.01**



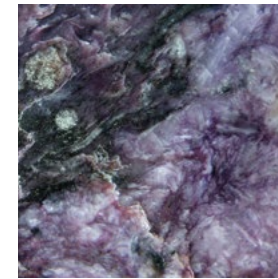
**Chlorite Crunch Panorama
(Dark) C-0266.01**



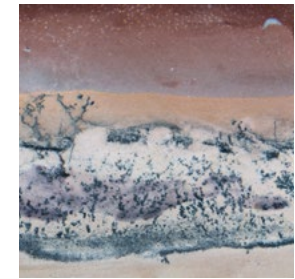
**Ethereal Dream Rose
(Light) C-0293.02**



**Indigo, Going, Gone
(Blue) C-0294.01**



**Charoite Storm
(Purple) C-0295.01**



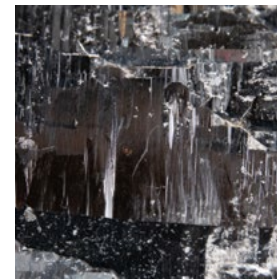
**Scenic Jasper
(Original) C-0296.01**



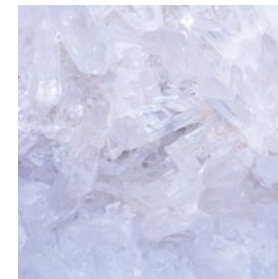
**Chlorite Crunch Macro
(Light) C-0265.01**



**Quartz Rockface
(White) C-0285.01**



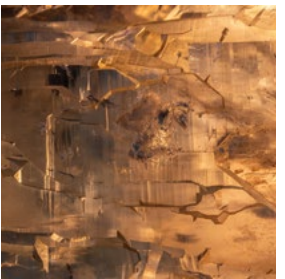
**Quartz Sentinel
(Smoky Black) C-0286.01**



**Quartz Cluster
(White) C-0283.01**



**Calcite Winter
(White) C-0284.01**

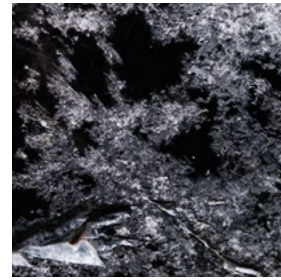


**Citrine Cathedral
(Bronze) C-0267.01**

**SHOWCASING THE LUSCIOUS,
GLITTERING SHAPES AND
COLOURS OF PLANET EARTH'S
ULTRA-SLOW-GROWTH CREATIONS.**



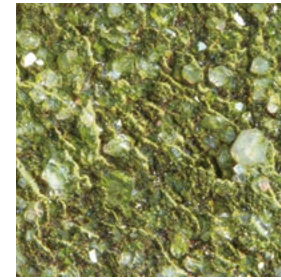
**Citrine Tantric Twin
(Smoke) C-0268.01**



**Crosscut Moonscape
(Quartz) C-0269.01**



**Druzy Crunch
(Quartz) C-0270.01**



**Epidote Crunch
(Green) C-0271.01**



**Fluorite Chunk
(Green) C-0272.01**



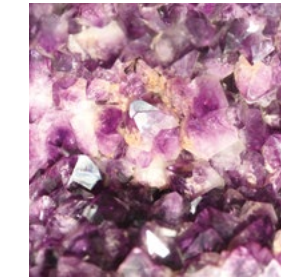
**Bloom Macro
(Amethyst) C-0186.01**



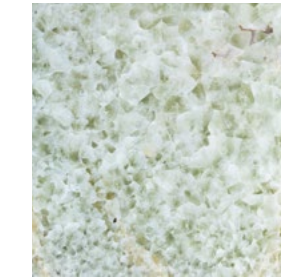
**Bloom Wide
(Amethyst) C-0187.01**



**Crystal Shoreline
(Amethyst) C-0188.01**



**Giant Macro
(Amethyst) C-0189.01**



**Agate Crunch
(Moss and Ice) C-0259.01**



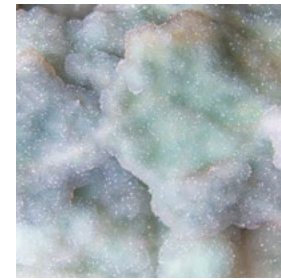
**Fluorite Cubit
(Teal) C-0274.01**



**Golden Healer
(Orange) C-0276.01**



**Gwindle Crunch
(Quartz) C-0277.01**



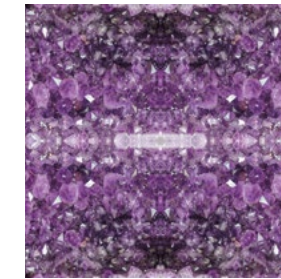
**Druzy Foamscape (Light
Green) C-0264.01**



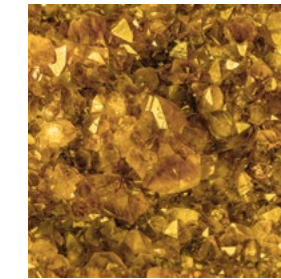
**Labradorite Fissure
(Mauve) C-0278.01**



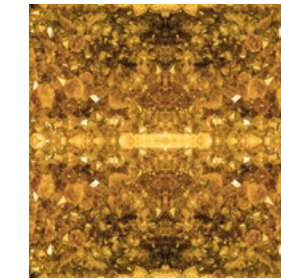
**Royal Pair
(Amethyst) C-0140.01**



**Royal Pair Kaleidoscope
(Amethyst) C-0191.01**



**Royal Pair
(Citrine) C-0140.02**



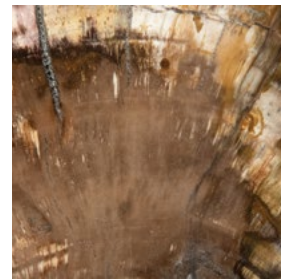
**Royal Pair Kaleidoscope
(Citrine) C-0191.02**



**Apophyllite Crunch
(Peach and White) C-0262.01**



**Orthoclase Temple
(White) C-0279.01**



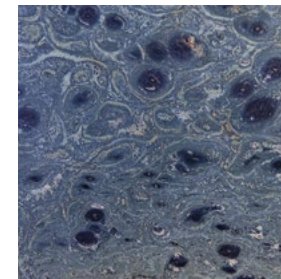
**Petrified Radial
(Browns) C-0280.01**



**Petrified Rockface
(Browns) C-0281.01**



**Smoky Crunch Macro
(Quartz) C-0287.01**



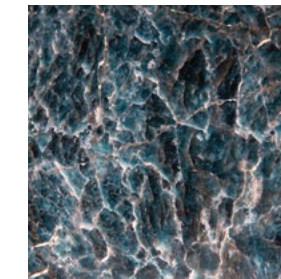
**Stromatolite Puddles
(Navy) C-0288.01**



**Celestite Crunch
(Ocean Spray) C-0263.01**



**Amethyst Calcite Crunch
(Raspberry) C-0260.01**



**Apatite Fissure
(Topaz) C-0261.01**

**ANY OF OUR PATTERNS CAN PRINT
ON A RANGE OF PREMIUM SUBSTRATES**

Commercial Type II Terralon (PVC Free)

Commercial Type II Vinyl (Smooth, Textured,
Metallics, Bling, Prisma)

Residential Type I Nolar

Window Film, Adhesive Backed, Floor Sticker,
and Dry Erase



Royal Pair Kaleidoscope (Amethyst) C-0191.01

ALL THIS AND MORE

rollout.ca/collections/core-frequencies

@rollout